

## **PUBLIC SERVICES AND RECREATION**

Public services and recreation opportunities within Cambria County support a variety of essential functions and services provided by County and local governments and also to a large extent by public and private non-profit organizations within the County. This section provides a profile of parks/recreation, fire protection, police protection, emergency medical services, educational facilities, cultural resources and health care facilities as well as solid waste management and stormwater/floodplain management in the County.

### **Public Services**

#### Cambria County Department of Emergency Services

Cambria County maintains a Department of Emergency Services that establishes the County's role in emergency management. Cambria County's Emergency Management Agency (EMA) is a division of the Department of Emergency Services. The Cambria County Emergency Management Agency is tasked with providing planning for all municipalities in Cambria County, 61 Superfund Amendment and Reauthorization Act (SARA) facilities, 7 County owned facilities and 33 School Plans.

Cambria EMA also assists in planning for airports, prisons, medical facilities and high hazard downstream dam plans. Cambria EMA also provides awareness and education on natural disasters such as tornadoes, drought, winter storms, floods, transportation and hazardous material emergencies.

#### Cambria County Special Hazards Assistance Response Program (SHARP)

Cambria County's SHARP Hazmat team came into existence in April, 1988. It was the result of several years of planning and research on the part of the Cambria County Office of Emergency Management and the Cambria County Volunteer Firemen's Association. SHARP has proven to be an effective solution to the county's increasing exposure and vulnerability to the occurrence of a hazardous material incident.

The SHARP HazMat team is a Pennsylvania State certified hazardous material response team whose duties include product identification, research, leak control, spill control, extinguishment, monitoring, sampling, hazard removal (not permanent disposal), neutralization and decontamination.

SHARP utilizes the task force concept of mutual aid response from the sixty-eight fire and emergency medical service departments throughout Cambria County. The SHARP team is dispatched via the Cambria County 9-1-1 Center. SHARP responds with four units as its core response. Hazmat One, a commercial vehicle capable of transporting five personnel and carrying the bulk of the team's equipment, including an on-board command post, responds from Station 22 in Ebensburg. A 15 foot supply trailer, carrying the bulk of the team's absorbents, responds from Station 1 in Richland with

Utility 15. Other units include a support apparatus from Station 22, Utility 22-8 and Medic 38-1 from Conemaugh Hospital in Johnstown. Other equipment necessary to perform incident operations are provided for by fire and EMS departments on scene.

### Municipal Buildings

Municipal/Public buildings that serve the residents of Cambria County are located in all of the County's 63 municipalities. Each community maintains a municipal building for the general administration of local government services and facilities.

### Police Service

Police protection in Cambria County is provided by local municipal police departments, regional police departments and the Pennsylvania State Police. The Cambria County Sheriff's Office also provides police and security at County buildings and court-related facilities. Thirty-two municipalities (51%) provide their own local police force. Seventeen municipalities (27%) contract with a neighboring municipal force or regional police force organization. Those municipalities without assigned local/regional police forces rely on the State Police. Fourteen municipalities (22%) rely on the State Police Troop A Ebensburg for their police coverage. In emergencies police are dispatched through the County's 911 Center.

The Police Coverage map on page 253 shows that a majority of the townships in the northern portion of the County rely on State Police for service. Boroughs in that portion of the County however, do maintain their own local police forces. The municipalities in the southern and west-central portions of the county do all rely on local police forces. Overall a majority of the police forces serve a single municipality.

### Fire Service

Fire service and protection in Cambria County is provided by 46 individual fire companies. Forty three of these companies are located in Cambria County with three being located in an adjoining County but serving a Cambria County Municipality.

The majority of these fire companies are organized as municipal volunteer fire departments. The Johnstown City Fire Department is the only full-time non-volunteer (paid) fire department in Cambria County. Fire companies generally provide service to a predetermined geographical area but are on-call as back-up support to assist each other during emergency situations. The Cambria County 911 Emergency Dispatch Center serves to coordinate all emergency fire calls.

## Twelve Departments Assist Emergency Management Services (EMS) with Quick Response Service (QRS)

- Ashville Fire Dept.
- Cambria Township (Colver) Fire Dept.
- Cresson Fire Dept.
- Gallitzin Fire Dept.
- Glendale Fire Dept.
- Johnstown City Fire Dept.
- Loretto Fire Dept.
- Middle Taylor Twp.
- Portage Fire Dept.
- Revloc Fire Dept.
- Richland Twp. Fire Dept.
- Summerhill Twp. Fire Dept.

The Fire Coverage map on page 254 shows that primarily in the southern and west-central portions of the County departments are maintained in most boroughs and townships. However, in the northern and east-central portions of the County, fire departments are physically located in the Borough with the surrounding townships either contracting or having some other type of agreements for services. Overall, fire departments serve one or two municipalities.

### Ambulance Service

Ambulance and Emergency Management Services (EMS) in Cambria County are provided by twenty-two (22) community-based nonprofit volunteer organizations that work in conjunction with local police and fire departments during emergency situations. All of the County's ambulance service providers are coordinated in terms of responsibility and each provider is dispatched to emergencies in cooperation with the County's 911 Center.

The Ambulance Coverage map on page 255 shows the primary service areas for the different providers. In eleven (11) municipalities services are provided by multiple providers. A review of the services areas shows a majority of the providers cover only one municipality. There are a number of regional based providers including the Cresson Ambulance, East Hills, Hilltop, Forest Hills, Portage and Ebensburg area Ambulance providers that provide services to more than one municipality. The number of Ambulance providers has dropped from approximately 30 in 2004 to 22 in 2011. This trend of mergers is expected to continue. Overall the Ambulance providers serve one to three municipalities. The following tables provide a summary of the police, fire and ambulance service providers by planning region and municipality.

**TABLE PR-1**  
**Police Fire Ambulance Coverage Summary**  
**Cambria County Planning Region 1 – Southern Region**

<b>Municipality</b>	<b>Police</b>	<b>Fire</b>	<b>Ambulance</b>
Adams Township	Adams Township Police Dept.	Dunlo Fire Dept. St. Michael Fire Dept.	Forest Hills Area Ambulance
Brownstown Borough	West Hills Police Dept.	West Hills Regional Fire Dept.	Hilltop Ambulance
Conemaugh Township	Conemaugh Township Police Dept.	Cover Hill Fire Dept.	Conemaugh Valley Regional Ambulance
Daisytown Borough	Stonycreek Township Police Dept.	Daisytown Fire Dept.	Conemaugh Valley Regional Ambulance
Dale Borough	Dale Borough Police Dept.	Dale Fire Dept.	Seventh Ward Ambulance Service
East Conemaugh Borough	East Conemaugh Police Dept.	Conemaugh Fire Dept.	Conemaugh Fire Dept. Ambulance
East Taylor Township	East Taylor Township Police Dept.	East Taylor Twp. Fire Dept.	East Taylor Twp. Fire Dept Ambulance
Ferndale Borough	Ferndale Borough Police Dept.	Ferndale Fire Dept.	Upper Yoder Twp. Ambulance
Franklin Borough	East Conemaugh Police Dept.	Franklin Fire Dept	Conemaugh Valley Regional Ambulance
Geistown Borough	Geistown Borough Police Dept.	Richland Twp. Fire Dept.	East Hills Ambulance Service
City of Johnstown	Johnstown City Police Dept.	Johnstown City Fire Dept.	Seventh Ward Ambulance Service West End Ambulance Service
Lorain Borough	Johnstown City Police Dept.	Oakland Fire Dept.	East Hills Ambulance Service
Lower Yoder Township	West Hills Police Dept.	Lower Yoder Twp. Fire Dept Westwood Fire Dept.	Hilltop Ambulance West End Ambulance Service
Middle Taylor Township	Johnstown City Police Dept.	Middle Taylor Twp. Fire Dept.	West End Ambulance Service
Richland Township	Richland Township Police Dept.	Richland Twp. Fire Dept.	East Hills Ambulance Service
Scalp Level Borough	Paint Township Police Dept. (Somerset County)	Scalp Level Fire Dept.	Northern EMS (Somerset County)
Southmont Borough	West Hills Police Dept.	Southmont Fire Dept.	Hilltop Ambulance
Stonycreek Township	Stonycreek Township Police Dept.	Oakland Fire Dept. Riverside Fire Dept.	Riverside Fire Dept. Ambulance
Upper Yoder Township	Upper Yoder Township Police Dept.	Upper Yoder Twp. Fire Dept.	Upper Yoder Twp. Ambulance
Westmont Borough	West Hills Police Dept.	West Hills Regional Fire Dept.	Hilltop Ambulance
West Taylor Township	Johnstown City Police Dept.	West Taylor Twp. Fire Dept.	West End Ambulance Service

Source: Cambria County Department of Emergency Services (2/11), adapted by EADS



**TABLE PR-2**  
**Police Fire Ambulance Coverage Summary**  
**Cambria County Planning Region 2 – Central Region**

<b>Municipality</b>	<b>Police</b>	<b>Fire</b>	<b>Ambulance</b>
Allegheny Township	State Police	Loretto Fire Dept.	Cresson Ambulance Service
Ashville Borough	Ashville Borough Police Dept.	Ashville Fire Dept.	Cresson Ambulance Service
Blacklick Township	Blacklick Township Police	Nanty Glo Fire Dept.	Blacklick Valley Ambulance
Cambria Township	Cambria Township Police Dept.	Cambria Township (Colver) Fire Dept. Revloc Fire Dept. Dauntless Fire Dept.	Ebensburg Area Ambulance
Cassandra Borough	State Police	Portage Fire Dept.	Portage Area Ambulance
Cresson Borough	Cresson Borough Police Dept.	Cresson Fire Dept.	Cresson Ambulance Service
Cresson Township	Cresson Township Police Dept.	Cresson Fire Dept.	Cresson Ambulance Service
Croyle Township	Croyle Township Police Dept.	South Fork Fire Dept. Summerhill Borough Fire Dept.	Forest Hills Area Ambulance
Ebensburg Borough	Ebensburg Borough Police Dept.	Dauntless Fire Dept.	Ebensburg Area Ambulance
Ehrenfeld Borough	Croyle Township Police Dept.	South Fork Fire Dept.	Forest Hills Area Ambulance
Gallitzin Borough	Gallitzin Borough Police Dept.	Gallitzin Fire Dept.	Gallitzin Area Ambulance
Gallitzin Township	Gallitzin Township Police Dept.	Ashville Fire Dept. Cresson Fire Dept. Gallitzin Fire Dept.	Cresson Ambulance Service Gallitzin Area Ambulance
Jackson Township	Jackson Township Police Dept.	Jackson Twp. Fire Dept.	Jackson Twp. Ambulance Service
Lilly Borough	Cresson Township Police Dept.	Lilly Fire Dept.	Cresson Ambulance Service Portage Area Ambulance
Loretto Borough	Loretto Borough Police Dept.	Loretto Fire Dept.	Cresson Ambulance Service
Munster Township	State Police	Cresson Fire Dept. Portage Fire Dept.	Cresson Ambulance Service Ebensburg Area Ambulance
Nanty Glo Borough	Nanty Glo Police Dept.	Nanty Glo Fire Dept.	Blacklick Valley Ambulance
Portage Borough	Portage Borough Police Dept.	Portage Fire Dept.	Portage Area Ambulance
Portage Township	State Police	Portage Fire Dept.	Portage Area Ambulance

**Police Fire Ambulance Coverage Summary**  
**Cambria County Planning Region 2 – Central Region (cont.)**

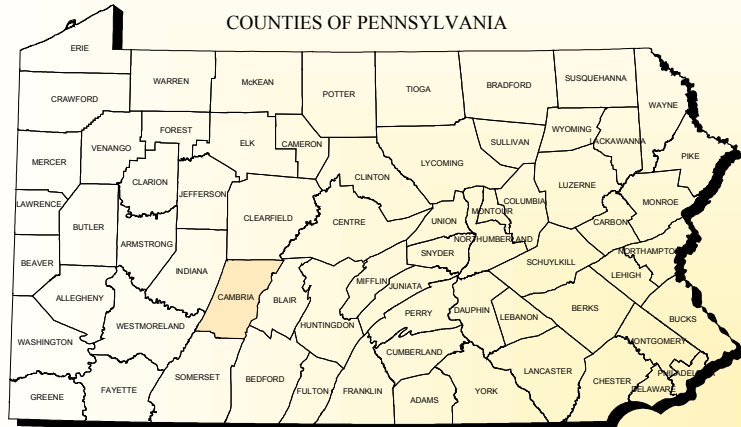
<b>Municipality</b>	<b>Police</b>	<b>Fire</b>	<b>Ambulance</b>
Sankertown Borough	Sankertown Borough Police Dept.	Cresson Fire Dept.	Cresson Ambulance Service
South Fork Borough	South Fork Borough Police Dept.	South Fork Fire Dept.	Forest Hills Area Ambulance
Summerhill Borough	South Fork Police Dept.	Summerhill Borough Fire Dept.	Forest Hills Area Ambulance Portage Area Ambulance
Summerhill Township	Summerhill Township Police Dept.	Summerhill Twp. Fire Dept.	Forest Hills Area Ambulance Portage Area Ambulance
Tunnelhill Borough	Cresson Township Police Dept.	Gallitzin Fire Dept.	Gallitzin Area Ambulance
Vintondale Borough	Vintondale Borough Police Dept.	Vintondale Fire Dept.	Blacklick Valley Ambulance
Washington Township	Cresson Township Police Dept.	Lilly Fire Dept	Cresson Ambulance Service Portage Area Ambulance
Wilmore Borough	State Police	Wilmore Fire Dept.	Portage Area Ambulance

Source: Cambria County Department of Emergency Services (2/11), adapted by EADS

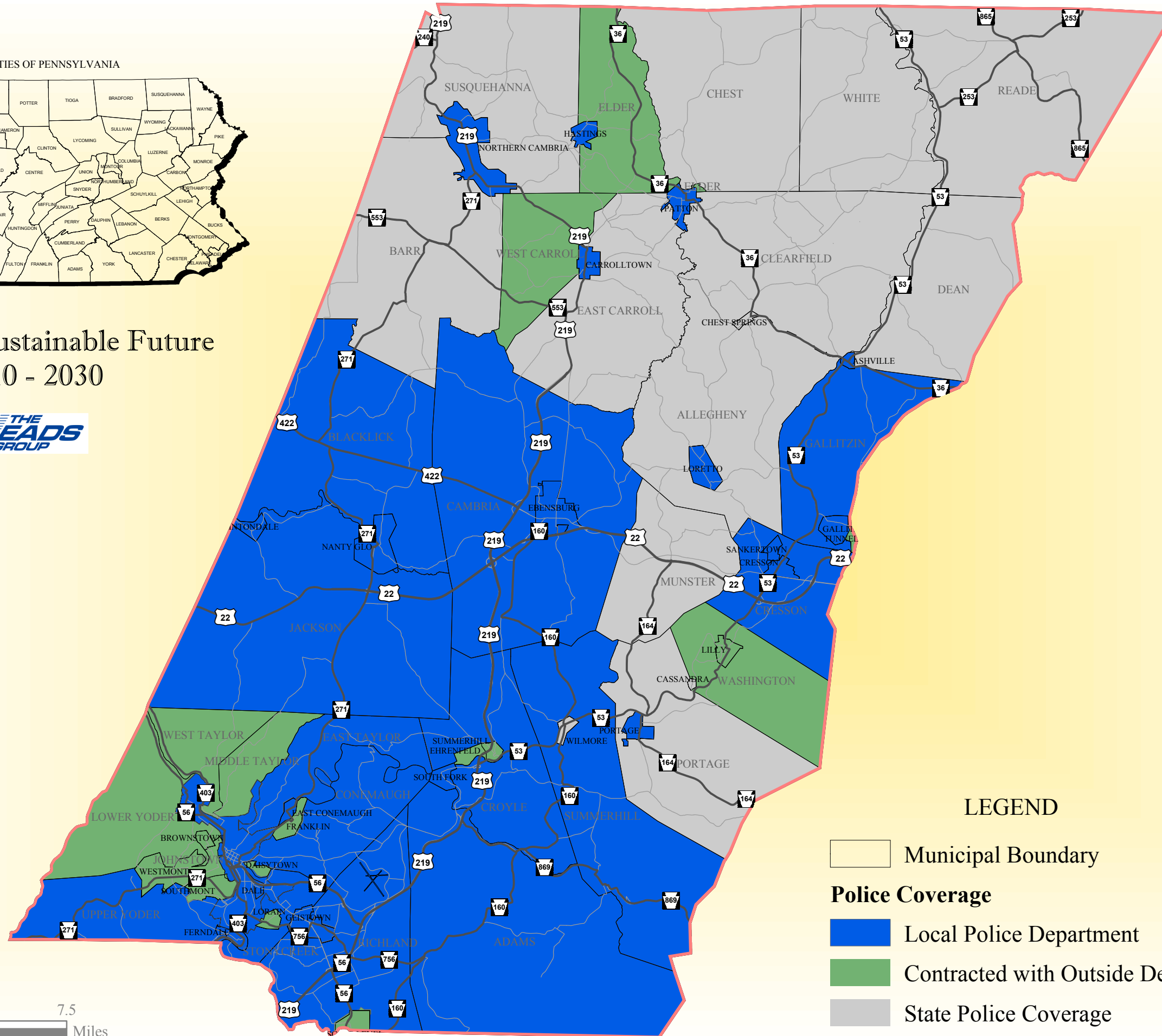
**TABLE PR-3**  
**Police Fire Ambulance Coverage Summary**  
**Cambria County Planning Region 3 – Northern Region**

<b>Municipality</b>	<b>Police</b>	<b>Fire</b>	<b>Ambulance</b>
Barr Township	State Police	Nicktown Fire Dept	Veterans Memorial Ambulance
Carrolltown Borough	Carrolltown Police Dept.	Carrolltown Fire Dept	John Carroll Ambulance Service
Chest Springs Borough	State Police	Ashville Fire Dept. Patton Fire Dept.	Patton Area Ambulance
Chest Township	State Police	Patton Fire Dept.	Patton Area Ambulance
Clearfield Township	State Police	Ashville Fire Dept. Patton Fire Dept.	Patton Area Ambulance
Dean Township	State Police	*Ashville Fire Dept.	Cresson Ambulance Service
East Carroll Township	State Police	Carrolltown Fire Dept Patton Fire Dept.	John Carroll Ambulance Service
Elder Township	Hastings Borough Police Dept.	Hastings Fire Dept. Patton Fire Dept.	Hastings Area Ambulance Patton Area Ambulance
Hastings Borough	Hastings Borough Police Dept.	Hastings Fire Dept.	Hastings Area Ambulance
Northern Cambria Borough	Northern Cambria Police Dept.	Hope Fire Dept. Spangler Fire Dept.	Veterans Memorial Ambulance
Patton Borough	Patton Borough Police Dept.	Patton Fire Dept.	Patton Area Ambulance
Reade Township	State Police	Reade Twp. Fire Dept.	Reade Twp. Ambulance Service
Susquehanna Township	State Police	Cherry Tree Fire Dept. (Indiana Co.) Hastings Fire Dept. Hope Fire Dept. Spangler Fire Dept.	Hastings Area Ambulance Veterans Memorial Ambulance
West Carroll Township	Carrolltown Borough Police Dept.	Carrolltown Fire Dept Spangler Fire Dept.	John Carroll Ambulance Service
White Township	State Police	Glendale Fire Dept. (Clearfield Co.)	Patton Area Ambulance





Source: Cambria County Department of Emergency Services (2/11), adapted by EADS



Toward a Sustainable Future  
2010 - 2030



#### LEGEND

-  Municipal Boundary
- Police Coverage**
-  Local Police Department
-  Contracted with Outside Dept.
-  State Police Coverage



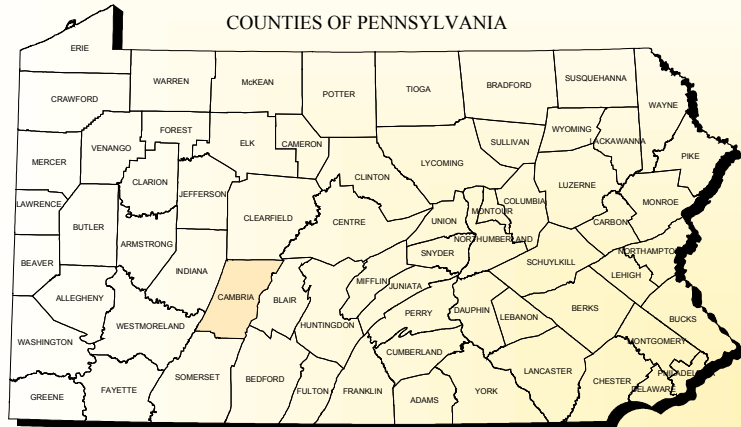
CAMBRIA COUNTY  
PLANNING  
COMMISSION

401 CANDLELIGHT DR.  
EBENSBURG, PA 15931

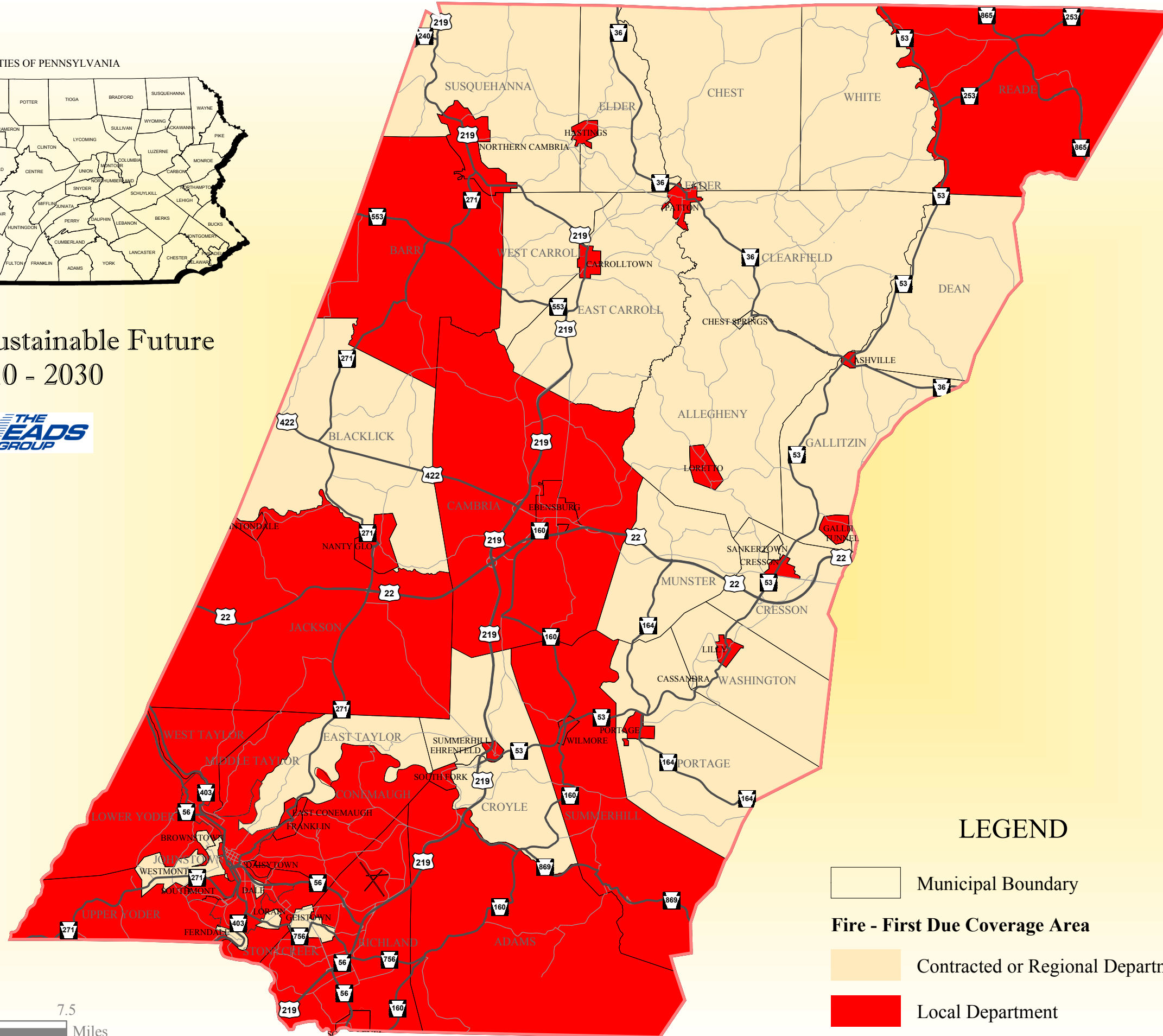
# CAMBRIA COUNTY COMPREHENSIVE PLAN POLICE COVERAGE



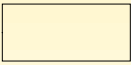


MAY 2011



Toward a Sustainable Future  
2010 - 2030



### LEGEND

-  Municipal Boundary
- Fire - First Due Coverage Area**
-  Contracted or Regional Department
-  Local Department



## CAMBRIA COUNTY PLANNING COMMISSION

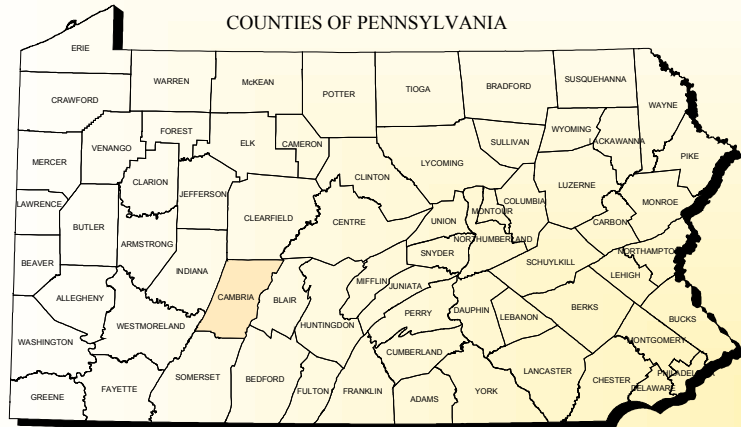
401 CANDLELIGHT DR.  
EBENSBURG, PA 15931

# CAMBRIA COUNTY COMPREHENSIVE PLAN FIRE COVERAGE

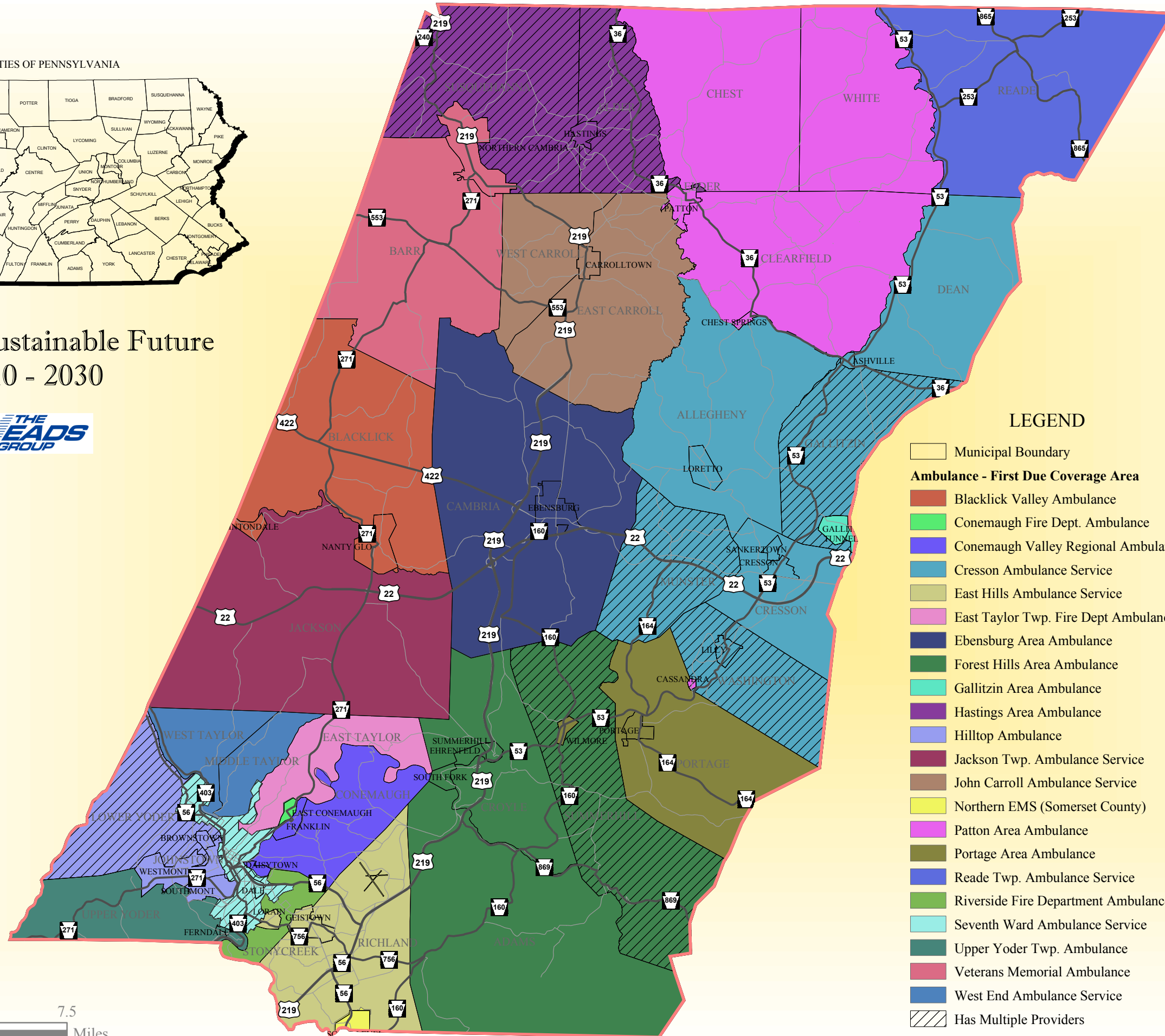


MAY 2011





Toward a Sustainable Future  
2010 - 2030



# LEGEND

- Municipal Boundary
- Ambulance - First Due Coverage Area**
- Blacklick Valley Ambulance
- Conemaugh Fire Dept. Ambulance
- Conemaugh Valley Regional Ambulance
- Cresson Ambulance Service
- East Hills Ambulance Service
- East Taylor Twp. Fire Dept Ambulance
- Ebensburg Area Ambulance
- Forest Hills Area Ambulance
- Gallitzin Area Ambulance
- Hastings Area Ambulance
- Hilltop Ambulance
- Jackson Twp. Ambulance Service
- John Carroll Ambulance Service
- Northern EMS (Somerset County)
- Patton Area Ambulance
- Portage Area Ambulance
- Reade Twp. Ambulance Service
- Riverside Fire Department Ambulance
- Seventh Ward Ambulance Service
- Upper Yoder Twp. Ambulance
- Veterans Memorial Ambulance
- West End Ambulance Service
- Has Multiple Providers



CAMBRIA COUNTY  
PLANNING  
COMMISSION

401 CANDLELIGHT DR.  
EBENSBURG, PA 15931

# CAMBRIA COUNTY COMPREHENSIVE PLAN AMBULANCE COVERAGE



MAY 2011

## **Educational Facilities**

Education facilities that serve the varied needs of the citizens are vital to Cambria County and are intimately related to each community's social, economic, and cultural quality and development. In addition, the availability of various types of resources along with the quality of education received directly relates to the quality of the work force available within the county. The following map shows the locations of these Educational Facilities.

### **Elementary and Secondary Education**

The citizens of Cambria County are provided elementary and secondary education through a system of 14 public school districts, two (2) parochial or non-public High schools, two (2) Career and Vocational Technology Schools and a number of parochial pre-school and elementary level schools. The following provides a listing of these schools:

- ❑ Public School Districts:
  - Blacklick Valley School District
  - Cambria Heights School District
  - Central Cambria School District
  - Conemaugh Valley School District
  - Ferndale Area School District
  - Forest Hills School District
  - Greater Johnstown School District
  - Glendale Area School District (portion in Clearfield County)
  - Northern Cambria School District
  - Penn Cambria School District
  - Portage Area School District
  - Richland School District
  - Westmont Hilltop School District
  - Windber School District (portion in Somerset County)
- ❑ Parochial or Non-Public High Schools:
  - Bishop Carroll High School - Ebensburg
  - Bishop McCort High School - Johnstown
- ❑ Career and Vocational Technology Schools:
  - Admiral Peary Vocational Technical School - Ebensburg
  - Greater Johnstown Career and Technology Center - Johnstown

❑ Parochial or Non-Public Pre and Elementary School:

- All Saints Catholic School - Cresson
- Cambria County Christian School - Johnstown
- Cathedral Catholic Academy - Johnstown
- Genesis Christian Academy- Johnstown
- Holy Name School- Ebensburg
- Northern Cambria Catholic School - Nicktown
- Our Mother of Sorrow School- Johnstown
- St Andrew School - Johnstown
- St Benedict Catholic School Carrolltown
- St Benedict Elementary School - Johnstown
- St Michael School - Loretto
- St Sophia Orthodox Christian Academy - Johnstown

### Higher Education

The County is served by a system of four (4) traditional higher education institutions. These schools provide a range of opportunities from a Public University to a Private College and University to a Community College. These institutions include:

- University of Pittsburgh at Johnstown (UPJ) – Richland Twp.
- Mount Aloysius College - Cresson
- St. Francis University - Loretto
- Pennsylvania Highlands Community College – Richland Twp. & Cambria Twp.

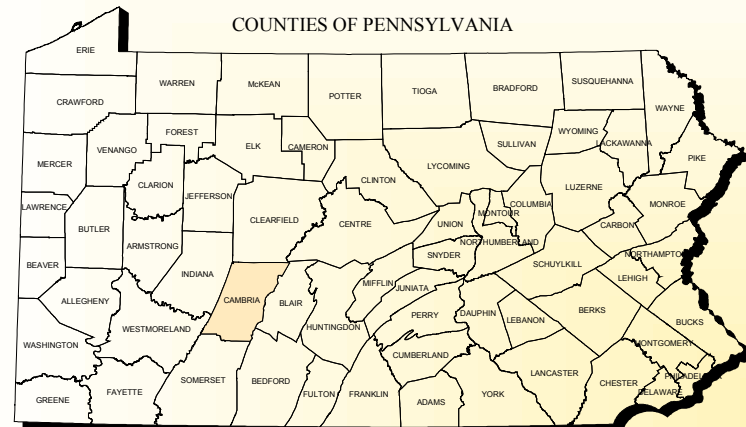
### Post Secondary Career and Job Training

The County is also home to a number of non-traditional post-secondary institutions offering specialized degrees and technical training opportunities including:

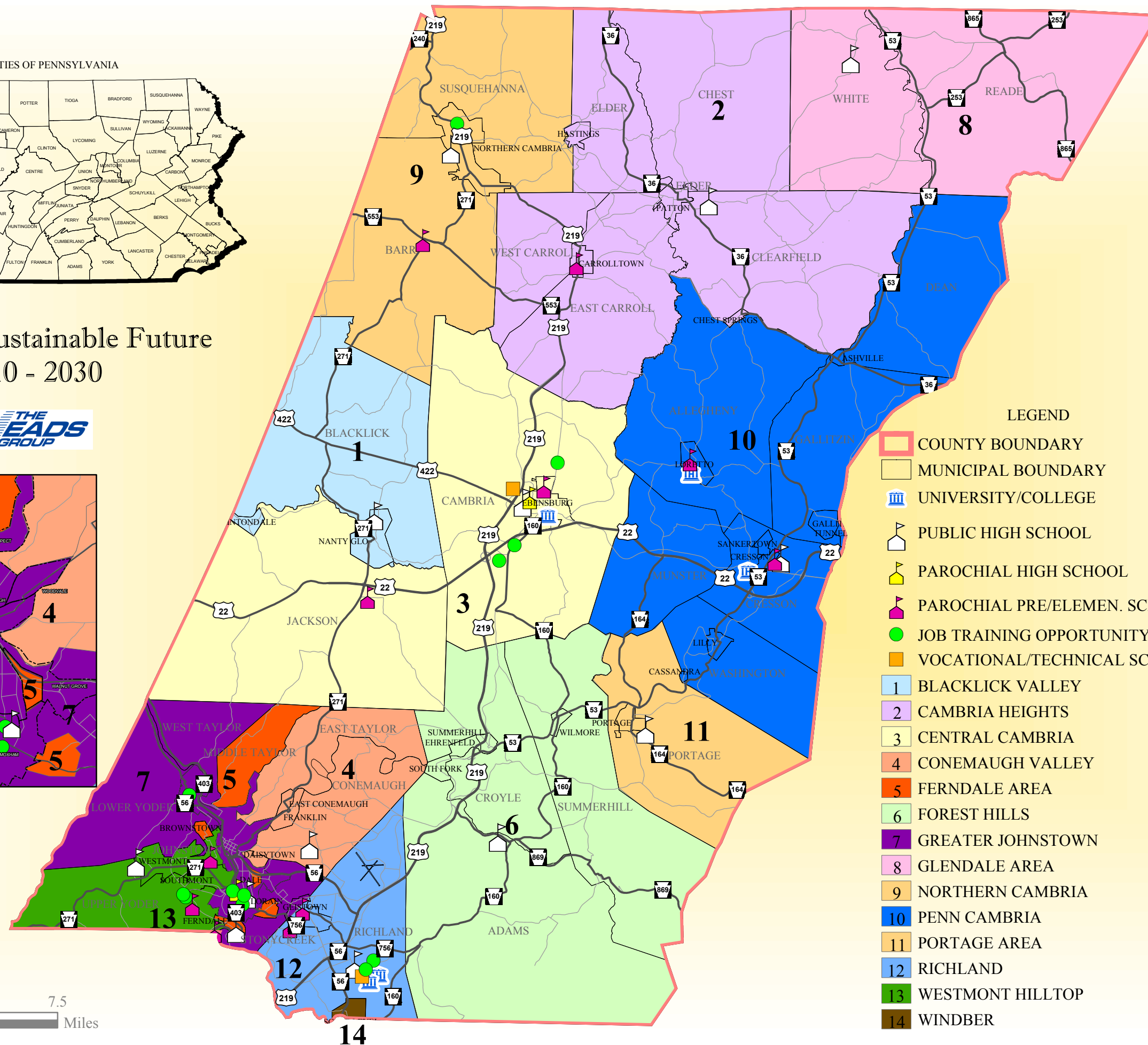
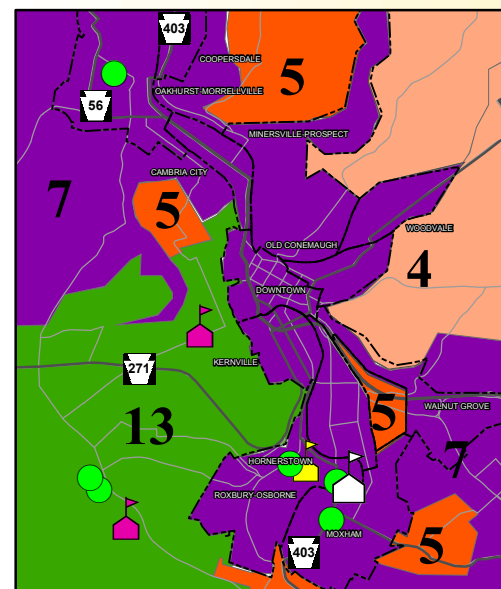
- Cambria-Rowe Business College - Johnstown
- Christ the Saviour Theological Seminary - Johnstown
- Wrightco Technologies Technical Training Institute - Ebensburg
- Commonwealth Technical Institute – Johnstown
- Hiram G. Andrews Center - Johnstown
- Pennsylvania Institute of Taxidermy, Inc - Ebensburg
- Laurel Highlands Therapeutic Academy - Ebensburg
- Conemaugh School of Nursing – Johnstown
- University of Pittsburgh at Johnstown (UPJ) Nursing Program – Richland Township
- Cambria County PA CareerLink System – Richland Twp & Northern Cambria
- Goodwill Industries - Community-Based Work Assessment (CBWA) service

Source: PA Department of Education and the EADS Group, 2011





Toward a Sustainable Future  
2010 - 2030



#### LEGEND

- COUNTY BOUNDARY
- MUNICIPAL BOUNDARY
- UNIVERSITY/COLLEGE
- PUBLIC HIGH SCHOOL
- PAROCHIAL HIGH SCHOOL
- PAROCHIAL PRE/ELEMEN. SCHOOL
- JOB TRAINING OPPORTUNITY
- VOCATIONAL/TECHNICAL SCHOOL
- 1 BLACKLICK VALLEY
- 2 CAMBRIA HEIGHTS
- 3 CENTRAL CAMBRIA
- 4 CONEMAUGH VALLEY
- 5 FERNDALE AREA
- 6 FOREST HILLS
- 7 GREATER JOHNSTOWN
- 8 GLENDALE AREA
- 9 NORTHERN CAMBRIA
- 10 PENN CAMBRIA
- 11 PORTAGE AREA
- 12 RICHLAND
- 13 WESTMONT HILLTOP
- 14 WINDBER



## CAMBRIA COUNTY PLANNING COMMISSION

401 CANDLELIGHT DR.  
EBensburg, PA 15931

# CAMBRIA COUNTY COMPREHENSIVE PLAN EDUCATIONAL FACILITIES



MAY 2011

## School District Enrollments

The following table provides school enrollments and projections for the fourteen (14) Public School Districts that serve Cambria County students.

**TABLE PR-4**  
**School Enrollments and Projections by Select Academic Years**  
**Cambria County School Districts**

School District	2007/08	2010/11	% Change 2007/08- 2010/11	2020/21*	Students Change 2010/11- 2020/21	% Change 2010/11- 2020/21
Blacklick Valley	663	689	3.92%	698	+9	1.31%
Cambria Heights	1,460	1,465	0.34%	1,425	-40	-2.73%
Central Cambria	1,844	1,792	-2.82%	1,782	-10	-0.56%
Conemaugh Valley	932	973	4.40%	883	-90	-9.25%
Ferndale Area	845	796	-5.80%	807	+11	1.38%
Forest Hills	2,147	2,006	-6.57%	1,716	-290	-14.46%
Glendale	853	809	-5.16%	624	-185	-22.87%
Greater Johnstown	3,027	3,162	4.46%	2,936	-226	-7.15%
Northern Cambria	1,185	1,217	2.70%	1,144	-73	-6.00%
Penn Cambria	1,798	1,758	-2.22%	1,770	+12	0.68%
Portage Area	969	934	-3.61%	732	-202	-21.63%
Richland	1,633	1,607	-1.59%	1,547	-60	-3.73%
Westmont Hilltop	1,720	1,714	-0.35%	1,585	-129	-7.53%
Windber	1,386	1,302	-6.06%	933	-369	-28.34%
<b>Cambria County</b>	<b>20,462</b>	<b>20,224</b>	<b>-1.16%</b>	<b>18,582</b>	<b>-1,642</b>	<b>-8.12%</b>

Source: PDE, 2011 (2007-08, 2010-11 enrollments)

\*PDE Projections (2020-2021)

A review of actual enrollments between the 2007/08 and 2010/11 school years reveals that enrollments in the Cambria County School Districts declined by a modest 1.16% (238 students) with five (5) school Districts actually experiencing increased enrollments. However, during the longer term (10 years), Cambria County School Districts are projected to incur an enrollment decline of 8.12% (1,642 students) by the 2020/2021 school year. Double Digit declines are projected for the Forest Hills District (14.46%), Portage Area School District (21.63%), Glendale School District (22.87%) and the Windber School District (28.34%). Overall, the long term enrollment trend is projected to be positive in only three (3) School Districts including the Blacklick Valley School District (1.31%), Ferndale Area School District (1.38%) and the Penn Cambria Scholl District (0.68%).

## **Social/Cultural Resources**

Citizens of the County have numerous informational, artistic and cultural needs and requirements. Cambria County fortunately has a number of facilities and organizations that serve these needs.

### Library System

Cambria County owns and operates the Cambria County Library System which oversees and provides funding and services to several small municipal and community-type libraries. The Cambria County Library System, established in 1963, has fourteen member libraries and a bookmobile. The Cambria County Library System is a federated library system, meaning that each library maintains local independence and has its own operating board. Participation in a county system is voluntary and every public library in Cambria County opted to become a member of the county system. In return every library shares in the county funds, enabling them to provide even better local library service.

The Cambria County Library Systems includes the following fourteen (14) Libraries:

- Beaverdale Public Library
- South Fork Public Library
- Cambria County Library - Johnstown
- Carrolltown Public Library
- Cresson Public Library
- Ebensburg Public Library
- Gallitzin Public Library
- Hastings Public Library
- Highland Community Library – Richland
- Lilly Washington Public Library
- Nanty Glo Public Library
- Northern Cambria Public Library
- Patton Public Library
- Portage Public Library

### Senior Centers

The mission of the Cambria County Area Agency on Aging is to enhance the quality of life of older citizens of Cambria County by promoting their well-being, dignity, independence, and safety through compassionate sponsorship of social service programs for aging adults. Important services and programs in areas such as social, recreational, education and health promotion for adults age 60 and over are provided by the agency through nine (9) Senior Activity Centers located throughout the County:

- Cresson Senior Center
- Ebensburg Senior Center
- East Hills Senior Center
- Forest Hills Senior Center
- Johnstown Senior Center
- Nanty Glo Senior Center
- Northern Cambria Senior Center
- Patton Senior Center
- Portage Senior Center

## Convention Centers

Convention Center facilities in Cambria County include the Conference Center at the University of Pittsburgh at Johnstown campus and the Frank J. Pasquerilla Conference Center located in downtown Johnstown. Several other gathering and meeting spaces are located in the County.

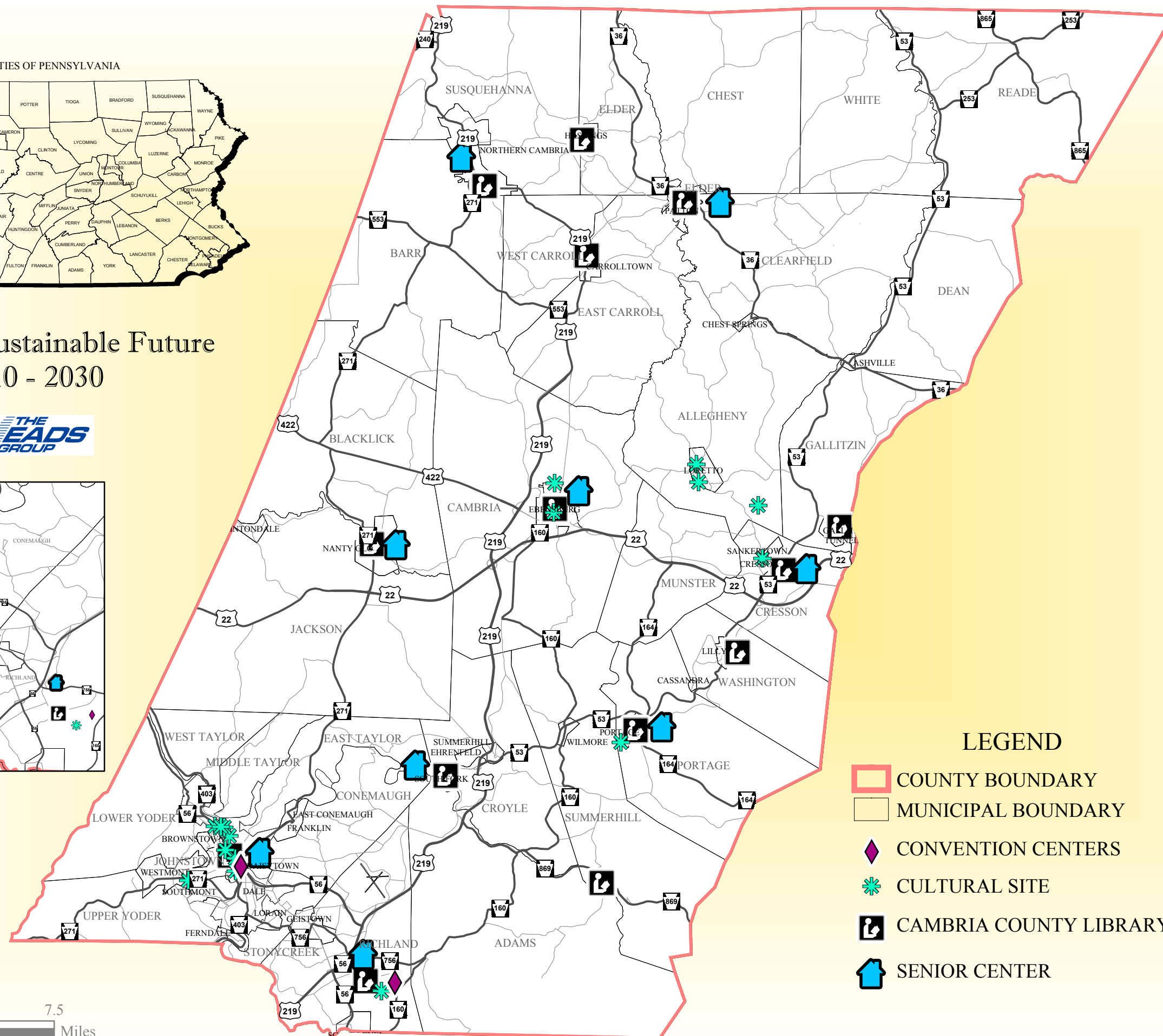
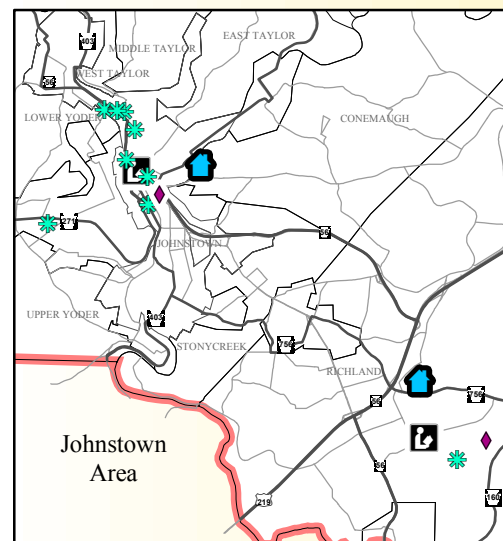
## Cultural Facilities

Cambria County is home to a number of facilities used for programs or activities involving the arts or other endeavors that encourage refinement or development of the mind. These facilities include performing arts centers, art production and galleries, museums, fairgrounds and playhouses. The following is a list of these facilities:

- Allegheny Highlands Regional Theatre - Ebensburg
- Cambria County Historical Society & Museum – Ebensburg
- Cambria County Fairgrounds - Ebensburg
- Community Arts Center of Cambria County - Westmont
- Johnstown Discovery Network Sites:
  - Johnstown Flood Museum
  - Johnstown Heritage Discovery Center
  - Johnstown Children’s Museum
  - Johnstown Incline Plan
  - Wagner-Ritter House and Garden
  - Grandview Cemetery
- Roxbury Bandshell - Johnstown
- Bottle Works Ethnic Arts Center - Johnstown
- ART WORKS in Johnstown! – Johnstown
- Cambria County War Memorial - Johnstown
- Pasquerilla Performing Arts Center - Richland
- Southern Alleghenies Museum of Art – Richland and Loretto
- Cresson Lake Playhouse – Loretto
- The Gardens of Mt. Assisi Monastery - Loretto
- Portage Station Museum - Portage
- Cresson Area Historical Association – Cresson



# Toward a Sustainable Future 2010 - 2030



CAMBRIA  
COUNTY  
PLANNING  
COMMISSION

401 CANDLELIGHT DR.  
EBENSBURG, PA 15931

# CAMBRIA COUNTY COMPREHENSIVE PLAN SOCIAL/CULTURAL FACILITIES



APRIL 2011

SCALE

0 1.25 2.5 5 7.5 Miles

## Health Care Facilities

The citizens of Cambria County are provided access to Health Care facilities and other Aging in Place type facilities through a system of Hospitals, Urgent Care Centers, Rehabilitation Centers, Nursing Care Facilities and other related facilities. The following provides a listing of facilities identified by the Pennsylvania Department of Health that are located in the County. The following map graphically depicts the locations of the Health Care facilities in the County.

### Hospitals – Conemaugh Health System

The Pennsylvania Department of Health lists four (4) Hospital facilities within the County. Two (2) are traditional hospitals that provide organized medical staff and equipment and services primarily for inpatient care of persons who require definitive diagnosis or treatment, or both, for injury, illness, pregnancy, or other disability. These two hospitals are both part of the Conemaugh Health System and include:

- Conemaugh Valley Memorial Hospital – Johnstown
- Miners Medical Center – Hastings

The other two (2) hospital facilities provide major rehabilitation and other specialized out-patient types of services. These two facilities are also part of the Conemaugh Health System and include:

- Crichton Rehabilitation Center - Johnstown
- Select Specialty Hospital – Johnstown

### Outpatient Facilities

The Conemaugh Health System provides approximately twenty (20) outpatient facilities in Cambria County. This outpatient network includes a range of care, including routine blood draws, physical therapy for adults and children and CT scans.

- |   |  |
|---|--|
| <ul style="list-style-type: none"><li>❑ <b>Johnstown Area:</b><ul style="list-style-type: none"><li>• Family Medical Center - Downtown</li><li>• John P. Murtha Regional Cancer Center</li><li>• Medical Office Building of Johnstown</li><li>• Memorial Medical Center Lee Campus Outpatient Center</li><li>• Parkhill Medical Center</li><li>• Crichton Rehabilitation, East Hills</li><li>• Geistown Blood Draw Service</li><li>• John P. Murtha Neuroscience &amp; Pain Institute</li><li>• Laurel Highlands Advanced Imaging</li><li>• MedWELL Urgent Care Center -</li><li>• Richland Care Center</li><li>• Dr.Dennis Glover &amp; Dr. John Yokitis</li><li>• Westmont Blood Draw Service</li></ul></li></ul> | <ul style="list-style-type: none"><li>❑ <b>Ebensburg/NantyGlo/Portage Area:</b><ul style="list-style-type: none"><li>• Crichton Rehabilitation, Ebensburg</li><li>• Ebandjeff Health Center</li><li>• Ebensburg Care Center</li><li>• MedWELL Urgent Care Center</li><li>• Portage Health Center</li></ul></li><li>❑ <b>Northern Cambria Area:</b><ul style="list-style-type: none"><li>• Miners Medical Center Outpatient Services</li><li>• Norcam Community Health Center Specialty Suite</li></ul></li></ul> |
|---|--|



### Urgent Care Centers

There are two (2) Urgent Care Centers in Cambria County including the Conemaugh Health System MedWELL Urgent Care facility located in Richland Township and Ebensburg and a private MedExpress facility located in Richland Township.

### Veterans Administration Facilities

The Veterans Administration maintains a Community Based Outpatient Clinic in Richland Township. This facility provides behavioral health, laboratory, nutrition preventive care, primary care, social work and tobacco cessation services.

On a regional level, the James E. Van Zandt VA Medical Center located in Altoona, Blair County serves more than 87,000 Veterans living in a 14 county area of including Cambria, Bedford, Blair Cameron, Centre, Clearfield, Clinton, Elk, Huntingdon, Indiana, Jefferson, Juniata, Mifflin, and Somerset. The Medical Center has 68 beds comprised of 28 acute care beds and 40 long term care beds.

### Home Care Facilities

A Home Care Facility provides non-skilled services including personal care, homemaking, companionship, respite care to individuals in their homes or other independent living environments. The Pennsylvania Department of Health lists fourteen (14) Home Care Facilities within the County:

- Alleghenies United Cerebral Palsy – Johnstown Area
- ALSM At Home - Johnstown Area
- Arbutus Park Retirement Community - Johnstown Area
- Atlas Realty Management Company - Cresson
- Cambria Health Services, Inc. - Summerhill
- Comfort Keepers - Ebensburg
- Home Instead Senior Care - Ebensburg
- Home Nursing Agency Community Services - Ebensburg
- Homestead Unlimited, Inc. - Johnstown
- Homewatch Caregivers Of Central Pa - Johnstown Area
- Nealen Personal Care, Inc. - Johnstown Area
- Rose Personal Care, Inc. - Johnstown Area
- Senior Life Johnstown - Johnstown Area
- The Lutheran Home At Johnstown - Johnstown Area

### Home Health Agencies

A Home Health Agency provides part time intermittent skilled nursing and other services in a patient's home, such as physical therapy, speech pathology, occupational therapy, medical social services or home health aides. Services are provided. The Pennsylvania Department of Health lists six (6) Home Health Agencies within the County:

- Allegheny Home Health - Ebensburg
- Cambria Home Health, Inc - Summerhill
- Community Nursing And Home Health Inc. - Johnstown Area
- Conemaugh Home Health - Johnstown Area
- Interim Healthcare Of Johnstown - Johnstown Area
- Resta Home Health, LLC - Northern Cambria

### Long Term Care/Nursing Care Facilities

Nursing Care Facilities provide a place of residence for people who require constant nursing care and have significant deficiencies with activities of daily living. The Pennsylvania Department of Health lists ten (10) facilities within the County:

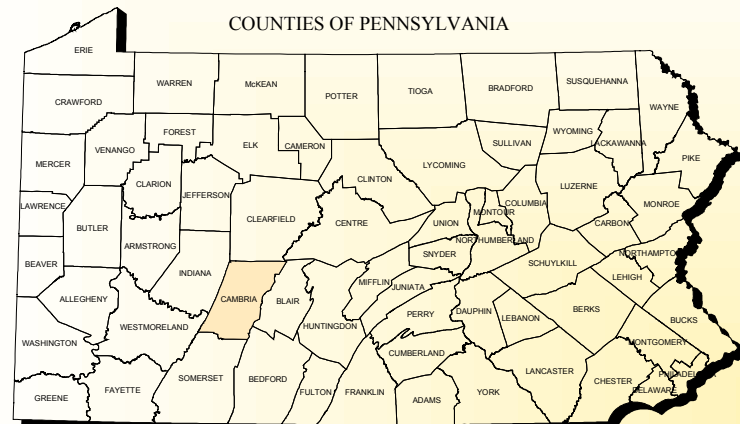
- Arbutus Park Manor - Johnstown Area
- Cambria Care Center - Ebensburg
- Golden Living Center-Haida (Haida Manor) - Hastings
- Richland Manor – Johnstown Area
- Good Samaritan Nursing Care Center – Johnstown Area
- Laurel Wood Care Center – Johnstown Area
- Lutheran Home At Johnstown - Johnstown Area
- Maple Winds Care Center - Portage
- Memorial Medical Center - Johnstown Area
- Presbyterian Home of Greater Johnstown - Johnstown Area

### Alternative Treatment Programs

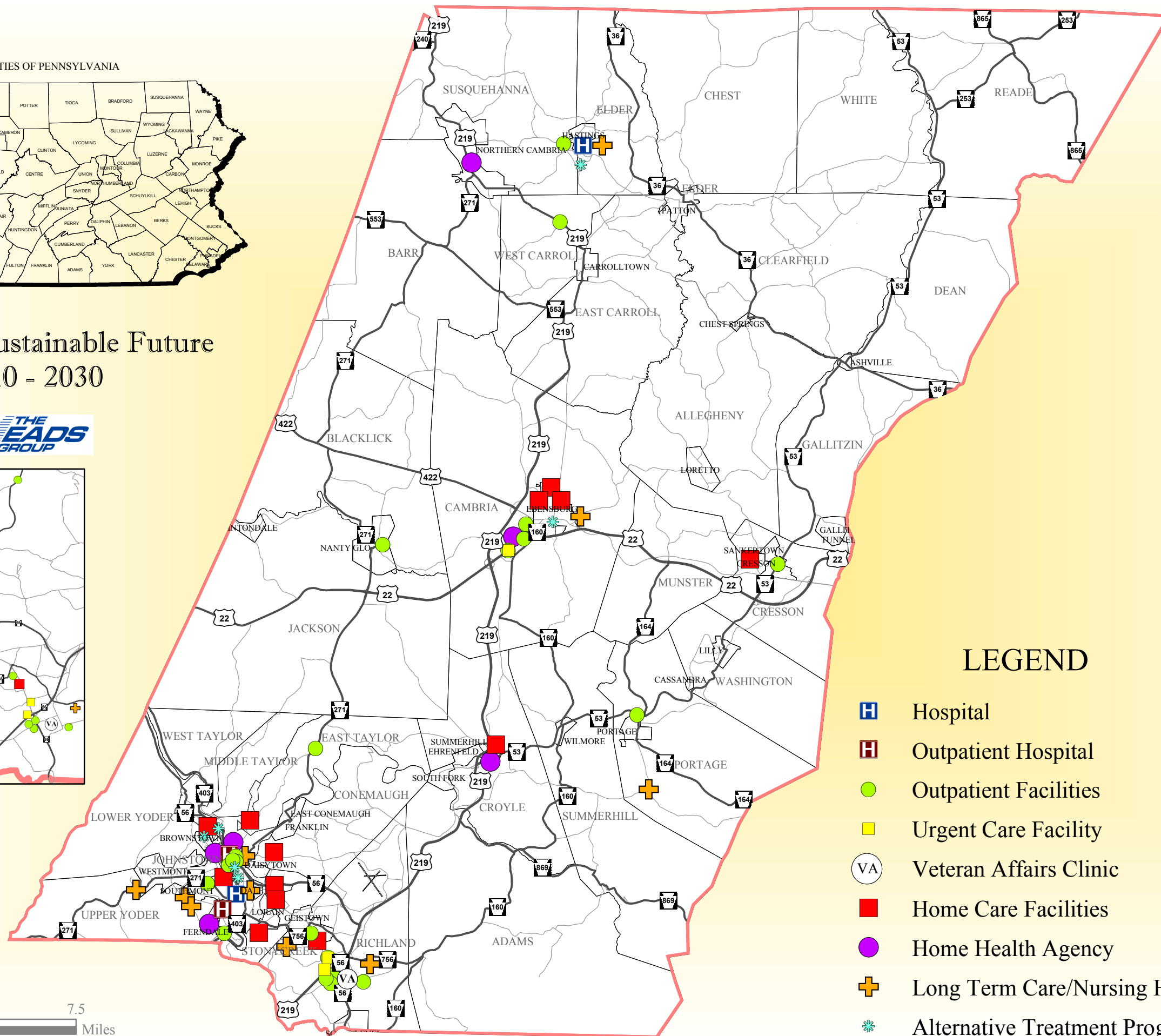
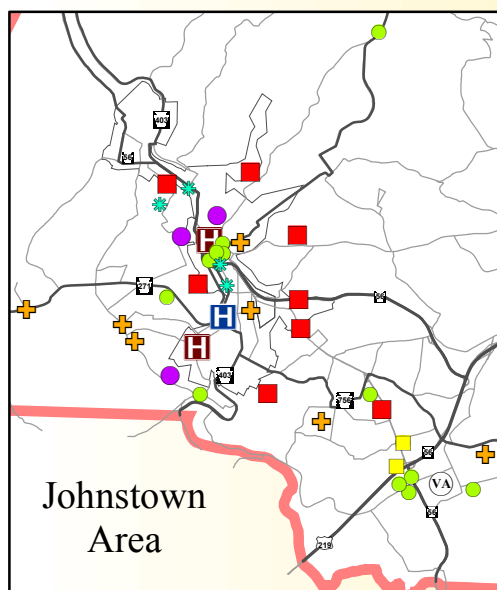
The Alternative Community Resource Program (ACRP) responds to the needs of children, adolescents, and adults who struggle with abuse, neglect or psychological and emotional disorders that keep them from living a normal productive life. ACRP works as an alternative to placement while providing comprehensive programs and treatment to address emotional, behavioral, life, family, and educational issues. This service spectrum includes programs across Child Welfare, Juvenile Justice and the Court System, Education, Mental & Behavioral Health and the community. ACRP maintains several offices throughout the county including:

- Four facilities in the Johnstown Area
- Ebensburg
- Hastings





Toward a Sustainable Future  
2010 - 2030



## LEGEND

- Hospital
- Outpatient Hospital
- Outpatient Facilities
- Urgent Care Facility
- Veteran Affairs Clinic
- Home Care Facilities
- Home Health Agency
- Long Term Care/Nursing Home
- Alternative Treatment Programs



CAMBRIA COUNTY  
PLANNING  
COMMISSION

401 CANDLELIGHT DR.  
EBENSBURG, PA 15931

# CAMBRIA COUNTY COMPREHENSIVE PLAN HEALTH CARE FACILITIES



APRIL 2011

## **Solid Waste Management**

The collection and disposal of residential and commercial waste in Cambria County is generally provided by the municipality under contract to numerous private haulers including:

- Gallucci Sanitation
- Waste Management
- Easterbrook Hauling
- Bennett Hauling
- M & F Trucking
- Hugill Sanitation
- Lee's Disposal
- Pro Disposal
- Burgmeier's Hauling Inc.
- Staton Hauling

A few municipalities provide waste collection and disposal utilizing their own municipal garbage departments. These include:

- Dale Borough
- Conemaugh Township
- Cresson Township
- Croyle Township
- Northern Cambria Borough

### Cambria County Solid Waste Management Authority

The Cambria County Solid Waste Management Authority is responsible for implementing the County's Municipal Waste Management Plan. The Authority was established in 1979 as an administrative arm of the County government. The County Commissioners authorized the organization of the Authority with the stated purpose of planning and regulating the storage, collection, transportation, processing and disposal of solid waste in Cambria County. The Authority's office is located at 507 Manor Drive in Ebensburg. Recycling of municipal waste through mandatory and voluntary programs is administered by the Cambria County Solid Waste Authority.

#### ❑ Blue Bin Recycling Sites

The Cambria County Solid Waste Authority operates a network of Big Blue Bin drop-off recycling sites throughout Cambria County. The bins are intended to recycle Newspapers, Magazines, Corrugated Cardboard, Aluminum and Bi-metal Cans and #1 & #2 Plastic Bottles/Jugs. Bins are located in the following locations:

- Hastings Borough
- Northern Cambria Borough (2)
- Patton Borough
- Loretto Borough
- Ebensburg Borough (2)
- Cresson Borough
- Lilly Borough
- Jackson Township
- Portage Borough
- Croyle Township
- Adams Township
- UPJ Campus (Richland Township)
- Geistown Borough
- Johnstown (2)
- Conemaugh Township
- East Conemaugh Borough

❑ Special Recycling Events

The Solid Waste Authority often holds special collections for materials other than what is collected at the big blue bins. The following provides an overview of the types of materials and devices that are collected through these programs:

- Electronics Recycling
- Household Hazard Waste Collection
- Mercury and Mercury Containing Devices
- Fishing Line Recycling
- Junk Mail Collections
- Compact Fluorescent Light bulbs (CFLs)
- Book Recycling Event
- Rechargeable Batteries

❑ Land Fills

Municipalities are responsible to provide for residential garbage collection to their residents. Some elect to contract with an independent hauler on a municipal level, others have executed intergovernmental agreements to bid out this service on a multi-municipal level and in some cases, a municipality provides this service through their own collection trucks and employees. In all cases, residential garbage is eventually accepted at landfill or disposal facilities. The following landfills and disposal facilities accept waste from Cambria County haulers and residents.

- Waste Management-Laurel Highlands – Vintondale, Cambria County
- Waste Solutions Inc-Mosteller Landfill – Somerset, Somerset County
- Waste Management -Shade Landfill – Cairnbrook, Somerset County
- Waste Management -Southern Alleghenies – Davidsville, Somerset County
- Superior Green Tree - Kersey, Elk County
- Waste Management - Evergreen Landfill – Homer City, Indiana County
- BCRRF – Altoona, Blair County

❑ Illegal Dump Sites

The Solid Waste Management Authority in coordination with Keep Cambria County Beautiful (formerly PA Clean Ways) began a complete re-survey of the entire County for illegal dump sites in 2009. Illegal dumpsite identification was completed by driving all public roads and contacting various constituent groups such as municipal offices and community services, state agencies and environmental and conservation groups in the area. Farm dumps and private dumps were not included in the survey.

The survey work was complete in April 2010 and yielded approximately 203 individual sites. Fifty-five, or 27%, of the surveyed sites were in the vicinity (50 feet and within) of some sort of waterway or body of water. Of those, 27 sites had waste materials directly in the waterway itself.

Responsibility for remediating these illegal dump sites is a collaborative effort between the Solid Waste Management Authority, Keep Cambria County Beautiful

and local Municipalities. The Solid Waste Management Authority works with Keep Cambria County Beautiful and local Municipalities to organize local cleanup efforts. In addition a State level program called the "Great PA Cleanup" seeks to aid local volunteer groups in organizing clean up events. Together, the efforts are helping rid the County of this problem. The following table summarizes the Illegal Dumpsites and Trash Collection by Municipality and Planning Region.

**TABLE PR-5**  
**Illegal Dumpsites and Trash Collection**  
**Cambria County Planning Region 1 – Southern Region**

<b>Municipality</b>	<b>Illegal Dumpsites</b>	<b>Trash Collection</b>	<b>Curbside Recycling</b>	<b>Drop Off Recycling</b>
Adams Township	8	X	X	-
Brownstown Borough	1	X	-	-
Conemaugh Township	6	X	X	-
Daisytown Borough	0	X	-	-
Dale Borough	0	X	-	-
East Conemaugh Borough	0	X	-	X
East Taylor Township	4	X	-	-
Ferndale Borough	0	X	X	-
Franklin Borough	1	X	-	-
Geistown Borough	2	X	X	-
City of Johnstown	4	X	X	-
Lorain Borough	0	X	-	-
Lower Yoder Township	5	X	X	-
Middle Taylor Township	4	X	-	-
Richland Township	8	X	X	X
Scalp Level Borough	1	X	-	-
Southmont Borough	0	X	X	-
Stonycreek Township	2	X	X	-
Upper Yoder Township	3	X	X	X
Westmont Borough	3	X	X	-
West Taylor Township	3	X	-	-
<b>Total</b>	<b>55 sites</b>	<b>100%</b>	<b>50%</b>	<b>14%</b>

Source: Cambria County Illegal Dumpsite Survey, April 2010

**TABLE PR-6**  
**Illegal Dumpsites and Trash Collection**  
**Cambria County Planning Region 2 – Central Region**

<b>Municipality</b>	<b>Illegal Dumpsites</b>	<b>Trash Collection</b>	<b>Curbside Recycling</b>	<b>Drop Off Recycling</b>
Allegheny Township	5	X	-	-
Ashville Borough	0	X	-	-
Blacklick Township	8	X	-	-
Cambria Township	11	X	X	X
Cassandra Borough	1	X	-	-
Cresson Borough	1	X	X	X
Cresson Township	0	X	X	-
Croyle Township	6	X	X	-
Ebensburg Borough	0	X	X	X
Ehrenfeld Borough	0	X	X	X
Gallitzin Borough	0	X	-	-
Gallitzin Township	3	-	-	-
Jackson Township	15	X	X	-
Lilly Borough	0	X	X	X
Loretto Borough	0	X	X	-
Munster Township	1	X	-	-
Nanty Glo Borough	1	X	-	-
Portage Borough	0	X	X	X
Portage Township	8	X	-	-
Sankertown Borough	0	X	-	-
South Fork Borough	1	X	-	-
Summerhill Borough	0	X	-	-
Summerhill Township	5	X	-	-
Tunnelhill Borough	0	-	-	-
Vintondale Borough	0	X	-	-
Washington Township	5	X	-	-
Wilmore Borough	0	X	-	-
<b>Total</b>	<b>71 sites</b>	<b>93%</b>	<b>37%</b>	<b>22%</b>

Source: Cambria County Illegal Dumpsite Survey, April 2010

**TABLE PR-7**  
**Illegal Dumpsites and Trash Collection**  
**Cambria County Planning Region 3 – Northern Region**

<b>Municipality</b>	<b>Illegal Dumpsites</b>	<b>Trash Collection</b>	<b>Curbside Recycling</b>	<b>Drop Off Recycling</b>
Barr Township	14	X	-	-
Carrolltown Borough	0	X	X	-
Chest Springs Borough	1	X	-	-
Chest Township	1	X	-	-
Clearfield Township	2	X	-	-
Dean Township	5	-	-	-
East Carroll Township	4	X	-	-
Elder Township	7	X	-	-
Hastings Borough	0	X	X	-
Northern Cambria Borough	2	X	X	-
Patton Borough	0	X	X	-
Reade Township	17	-	-	-
Susquehanna Township	13	X	-	-
West Carroll Township	8	X	-	-
White Township	3	X	-	-
<b>Total</b>	<b>77 sites</b>	<b>87%</b>	<b>27%</b>	<b>0%</b>

Source: Cambria County Illegal Dumpsite Survey, April 2010

## **Stormwater and Floodplain Management**

The provisions for municipal stormwater and floodplain management within Cambria County are regulated by Act 167, the Pennsylvania Stormwater Management Act, and Act 166, the Pennsylvania Floodplain Management Act. Stormwater and floodplain management decisions are made at the municipal level through enforcement of local ordinances that are consistent with local land use regulation such as zoning and subdivision ordinances to help prevent stormwater runoff and flooding.

### **Stormwater Management**

The Pennsylvania Stormwater Management Act of 1978 (PA Act 167) requires counties to prepare stormwater management plans for all watersheds within the county. Historically, these plans were prepared on a watershed by watershed basis. Within Cambria County, Act 167 storm water management plans are completed for the Stonycreek River drainage areas including the Bens Creek and Paint Creek drainage areas, Little Conemaugh River drainage area and Chest Creek drainage area. Recently, the PaDEP has encouraged counties to undertake county-wide stormwater management plans to reduce the time and costs involved. It is anticipated that any new ACT 167 plans prepared for the County will follow this county wide focus.

### **Floodplain Management**

The Federal Emergency Management Agency (FEMA) is undertaking a multi-year project to re-examine flood zones and develop detailed, digital flood hazard maps through the County. As of the writing of this Plan an ordinance approving the new Digital Flood Insurance Rate Map has not been formally adopted. When the ordinance is adopted the maps will then become effective, as will any new flood insurance requirements. It is known however that every municipality in the County, except those determined not to contain floodplains, will need to update their Floodplain Ordinances to reflect changes in the revised floodplains.

## **Recreation Facilities**

The County is served by an extensive system of recreational facilities, services, and programs. These assets can be described as indoor facilities, land, trails and water resources and range from sports arenas, municipal parks and state lands to trails and greenways to boating and fishing opportunities on several public access impoundments and waterways.

Recreational opportunities can support the achievement of many other county wide objectives. Land use, community infrastructure and public services can have a direct or indirect relationship on the types of recreation opportunities available to county residents. The benefits of a network of recreation that includes land, trail and water opportunities significantly contributes to the quality of life for county residents.

The majority of recreational facilities are owned and maintained by municipal governments or multi-municipal authorities, county wide recreation agencies or commissions. Cambria County, along with state and federal governments, are also key purveyors of recreational facilities and/or activities.

### Cambria County Conservation and Recreation Authority

Individual municipalities in the County have formed recreation authorities and in some cases have come together to form joint recreation authorities to oversee the recreation lands and facilities in their municipalities. On a County level, the Cambria County Conservation and Recreation Authority (CCCRA) works to acquire, construct, maintain, and operate recreation and environmental remediation facilities and to conserve resources for the benefit of the County's residents and visitors. The purpose of the Authority is to establish recreation opportunities and assist with the cleanup of coal mining polluted rivers throughout Cambria County.



## Open Space and Public Recreation Areas

There are approximately 65,000 acres of open space and public recreation areas in Cambria County. This includes municipal/community facilities, indoor/outdoor County facilities, State Game Lands, State Parks, State Forest, Federal land, 10 golf courses and other public water/land facilities. The following highlights these resources:

### ❑ Municipal Parks

There are approximately thirty six (36) municipal parks and community recreation areas located throughout the County, including:

- Roxbury Park
- Stackhouse Park
- Crichton-McCormick Park
- Revloc Ball Field
- Cresson Area Veterans Park
- 1889 Park
- Cambria County Fair Grounds
- Lake Rowena Recreational Complex
- Leidy Field Community Park
- Lilly-Washington Field and War Memorial
- Nanty-Glo Municipal Park
- Beaverdale Recreation Park
- Thomas Barnes Memorial Park and Pool
- Barnesboro Athletic Field
- St. Nicolas Recreation Area
- Patton Borough Recreation Park
- Hastings Recreation Park
- Spangler Recreation Complex
- Bakerton Recreation Park
- Highland Regional Park
- Lorain Borough Park
- Johnstown Central Park
- Point Stadium
- Cambria County War Memorial
- Luray Avenue Community Park
- The Mound
- Ebensburg Municipal Recreation Area
- Ebensburg War Memorial Park/Fields
- Ferndale Recreation Park/Trails
- V.E. Ericson Little League Park
- The Ridge
- Falcon Field
- Wilmore Heights
- Ehrenfeld Field
- Riverfront Park

### ❑ County Parks/Facilities:

There is one County owned Park and two (2) County run facilities in the County including:

- Duman Lake County Park - Duman Lake County Park is the only county owned park in Cambria County. The park grounds consist of 71 acres of wooded and open space and include picnic pavilions, campsites, modern restrooms, horseshoe courts, volleyball courts, a basketball court, ball field area, an exercise trail and swings sets. The park adjoins 19 acre Duman Lake which is owned by the Pennsylvania Fish and Boat Commission. The lake has a handicap fishing pier and is regularly stocked with trout and contains bass and other species.
- Cambria County War Memorial Arena – the War Memorial built in 1950 is a 4,000-seat indoor multi-purpose arena, auditorium and veterans memorial museum located in Johnstown. The Arena is the outgrowth of the initiative of the Johnstown Lions Club, under whose sponsorship representatives of 50-odd civic organizations

dedicated themselves early in World War II to support the idea of building a war memorial. The Arena has been home to several professional sports teams including for 22 years the Johnstown Chief's Ice Hockey Team and is now the alternate venue of the Wheeling Nailers. Professional Indoor football teams have also played in the Arena in recent history. In addition, many local high schools and youth leagues also use the arena for their games along with serving as a host facility for regional high school athletic events such as wrestling, cheerleading and basketball. The arena plays also host to a variety of events throughout the year including the annual Showcase for Commerce and several concerts for younger and older audiences.

- North Central Recreation Center – The Center is the sister facility of the Cambria County War Memorial Arena. The center is located just outside Ebensburg in Cambria Township along PA Rt 422 near US Rt 219 and US Rt 22. It is approximately 20 miles from Johnstown, 25 miles from Altoona and 25 miles from Indiana. The Center is home for learn to skate programs, public skate sessions, community hockey leagues. The facility is available for trade shows, wedding receptions, proms, or other special occasions.

□ State Land:

State Land in the County includes State Game Lands, State Parks and a State Forest and including:

- State Game Lands – Portions of State Game Lands #26, #42, #79, #158, #267, #184, #198, #108, #279, and #120 are all located within the County. Pennsylvania State Game Lands are public lands managed by the Pennsylvania Game Commission that are open to all residents for hunting, trapping, fishing, hiking and general open space activities.
- State Forest Land – The Gallitzin State Forest was named in honor of Dimetrius Augustine Gallitzin, Prince-Priest of the Alleghenies, who established a mission at Loretto in Cambria County in 1795. The Gallitzin State Forest consists of 2 separate areas of State Forest land located in Northern Bedford, Cambria, Indiana, and Northern Somerset counties. The total area of State Forest land is 15,336 acres. The Babcock Division located in Northern Somerset County and into Cambria County in Adams Township totals 13,482 acres. Approximately 3,000 acres are located in Cambria County. All State Forest lands are open to hunting, fishing and general recreation.
- Prince Gallitzin State Park - A major draw to this 6,249 acre Park is the 1,600 acre Glendale Lake and the large campground. Glendale Lake is a warm-water fishery with bass, pike and muskellunge as the most common game fish. The lake has nine public boat launching areas and three public mooring facilities. About 4,600 acres are open to hunting, trapping and the training of dogs during established seasons. Trails, horseback riding, on-road biking, mountain biking, hiking, camping and a sandy beach for swimming. Cross-country skiing and snowmobiling are popular wintertime activities.

- Laurel Ridge State Park - The 13,625-acre Laurel Ridge State Park stretches along Laurel Mountain from the Youghiogheny River at Ohiopyle, PA to the Conemaugh Gorge near Johnstown. This large park spans Cambria, Fayette, Somerset and Westmoreland counties. The main feature of the park is the 70-mile Laurel Highlands Hiking Trail, which features trail shelters for overnight camping. Almost the entire Park is open to hunting and Cross-country skiing and snowmobiling are also allowed in portions of the park.

#### □ Federal Land

Federal Land in the County includes a National Historic Site and a National Memorial including:

- Allegheny Portage Railroad National Historic Site - is located mainly in Cresson Township. The Allegheny Portage Railroad played a vital role in the nation's industrialization during the first half of the nineteenth century by linking the eastern United States to the west. Ten inclined planes allowed the Railroad to overcome grades up to 5¾ degrees along the rugged terrain of the Allegheny Mountains, as the boats from the Pennsylvania Main Line Canal were portaged over the mountains. Stretching across 36.6 miles, the Park is narrow and linear. Today's park covers 1,249 acres. The main portion of the park contains the Summit Level Visitor Center, the historic Lemon House, Engine House #6 Exhibit Shelter, the Skew Arch Bridge, picnic area and hiking trail.
- Johnstown Flood National Memorial - The National Park Service maintains nearly 147 acres of land at The Johnstown Flood National Memorial located at the site of the South Fork Dam. The land is managed as a wet meadow, the lakebed now supports a variety of plant, tree and shrub species on both sides of the meandering South Fork of the Little Conemaugh River. Birds, butterflies and insects thrive on the abundant flower and fruit sources, and an occasional deer can be seen grazing. Walking trails to the north and south abutments of the South Fork Dam are available for visitor enjoyment.

#### □ Public Recreation Areas

Public Recreation Areas in the County include large active recreation areas, public water/land facilities and nature areas. These areas include:

- Rock Run ATV Park – The Rock Run ATV Park is one of only a few dedicated ATV parks in the tri-state area. The trails of Rock Run are designed for riders of all levels. From leisurely family rides along rolling green trails, to more advanced black diamond trails, Rock Run gives riders a chance to match their skills to the terrain of the region. Rock Run now provides over 70 miles of trails for various types of off road vehicles.
- Otto Run Park – Otto Run Park is located off of Peaceful Valley road in Adams Township. The Park consists of 93-acres of natural woodlands. The Park is owned and maintained by Adams Township. A primitive trail and a fresh water stream are located in the Park.

- Wilmore Reservoir – The Cambria Somerset Authority owns and maintains the Wilmore Reservoir and surrounding land areas. The Reservoir has two Recreation Areas: South, near the breast of the Reservoir, and East, near Patrick's Road/Stump Club Area. Both recreation areas have composting toilets, access to hiking/biking trails, pavilions, and picnic tables. Recreation opportunities at the Wilmore Reservoir includes
  - Boating (non gasoline)
  - Hunting
  - Fishing
  - Mountain biking
  - Hiking trails
  - Canoeing
  - Kayaking
  - Picnicking
  - Geocaching
- Hinckston Run Reservoir - The Cambria Somerset Authority owns and maintains the Hinckston Run Reservoir and surrounding land areas. The Reservoir has a public access boat launch located along Hinckston Run Road. Other activities may be found around the Reservoir area. Recreation opportunities at the Hinckston Run Reservoir includes:
  - Boating (non gasoline)
  - Fishing
  - Geocaching
  - Hiking
  - Hunting
  - Mountain Biking
  - Trailer Boat Launch
  - Picnic tables
  - Picnic Pavilion
- Highland Sewer and Water Authority (HSWA) – The Authority's Beaverdam, Lloydell and Sandy Run Reservoirs are "Open" to Public Access and enjoyment. HSWA properties are policed, via a Cooperative Arrangement with the PA Game Commission, wherein they are treated the same as PA Game Lands. All regulations pertaining to Game Lands (No Motorized Vehicles, No Littering, No firewood cutting, etc apply.) apply. However, HSWA does allow Hiking, Horseback-riding, Mountain Biking, Bird-Watching, Stream-Fishing, etc.
- Park of 1889 – For the past 35 years, the Adams-Croyle Township Recreation Authority has guided the development of the Park of 1889 largely through intergovernmental partnerships with federal, state and county agencies. The Park of 1889 is located near the headwaters of the historic Lake Conemaugh near the site of the old South Fork Dam. The Park of 1889 has evolved from a few picnic tables to a fully operational facility that is enjoyed by nearly 100,000 visitors annually and includes overnight camping (RV) facilities, athletic fields, playgrounds, pavilions (for rental), handicapped accessible fitness trails and the Disasters Edge environmental center.
- University of Pittsburgh Johnstown Nature Area – Features a pristine nature preserve with several miles of scenic hiking trails.

- Powell Stackhouse Park – Stackhouse Park is a 277-acre wilderness park located in the Johnstown Area. The Park provides hikers, nature lovers, families and naturalists access to pristine trails and natural habitats.

#### □ Golf

Within the County there are ten (10) Golf Courses. There are four (4) public courses, four (4) semi-private courses and two (2) private clubs. The following is a list of the golf related opportunities in the County:

- Appledale Public Golfing - Public
- Johnstown Municipal Golf Course - Public
- Richland Greens Golf Center - Public
- Maple Crest Golf Course - Public
- Ebensburg Golf Club - Semi-Private
- Cambrian Hills Country Club - Semi-Private
- Immergrum Golf Club – Semi-Private
- Summit Country Club – Semi-Private
- Sunnehanna Country Club - Private
- Windber Country Club - Private

## **Greenways**

The Pennsylvania Department of Conservation and Natural Resources (DCNR) defines greenways as linear corridors of public and private land that serve as the linkages between specifically identified natural resource based or manmade features. They can be either land or water based and serve a variety of functions and benefits including recreation, transportation, community revitalization and economic development, natural resource conservation, environmental protection, wildlife habitat and migration and education.

### **Pittsburgh-to-Harrisburg Mainline Canal Greenway**

The Main Line Canal Greenway™ is the one Greenway designated through the County. The Pittsburgh-to-Harrisburg Mainline Canal Greenway™ is a 320-mile corridor that follows the historic path of the Main Line Canal System connecting Pittsburgh and Harrisburg, and points between. The Allegheny Ridge portion of this Greenway extends approximately one (1) mile to either side of the Little Conemaugh River through South Fork, Ehrenfeld, Summerhill and Wilmore Boroughs and extends into portions of Adams, Croyle and Summerhill Townships surrounding the Boroughs. It is not a single, long-distance trail for unimpeded travel but is intended to serve as a physical connector that improves opportunities for public access, linkage to important destinations, and economic development.

## **Proposed Greenways and Open Space Corridors**

The Southern Alleghenies Greenways and Open Space Network Plan was completed in 2007, outlines a series of policies and projects for linking existing natural and man-made resources within the Southern Alleghenies Region (Cambria, Blair, Bedford, Fulton, Huntingdon and Somerset Counties). By connecting these assets into a comprehensive greenway network, the region's natural resources are leveraged to promote and strengthen their value to the region. The Plan was developed to achieve the following purposes:

1. Conserve important natural resources;
2. Expand recreation opportunities;
3. Celebrate cultural heritage;
4. Bolster economic development;
5. Increase pedestrian and bicycle mobility; and
6. Promote healthy lifestyles.

The Cambria County Planning Commission was represented on the planning committee for the development of this plan. The Southern Alleghenies Greenways and Open Space Network Plan proposed four (4) Regional Greenways Corridors and four (4) Preservation Corridors/Habitats within Cambria County. These corridors can either transcend county boundaries within the Southern Alleghenies region or can serve to join the region with noteworthy projects in surrounding regions.

- ❑ Ghost Town Trail Connector - The Ghost Town Trail Connector is an approximately 18 mile recreational corridor that is situated within Cambria and Indiana Counties. The Ghost Town Trail Connector is envisioned to extend the approximately 8-10 foot wide asphalt path of the existing Ghost Town Trail. The proposed corridor extends beyond the Trail's current proposed terminus at Ebensburg to join the proposed Allegheny Crossing corridor. This corridor would extend from near Wilmore Borough northward along Summerhill Township's eastern border to connect with the existing Ghost Town Trail near Ebensburg Borough. Portions of the corridor would run adjacent to the Wilmore Reservoir. A maintained 6'-10' wide multipurpose trail is proposed. Completion of this trail would provide access from the Forest Hills Region to the Ghost Town Trail.
- ❑ Laurel Hill Greenway - The Laurel Hill Greenway is a 46 mile long recreational corridor connecting Ohiopyle State Park and Seward, near Johnstown. The Greenway is situated in Cambria, Fayette, Somerset and Westmoreland Counties, following the Laurel Ridge. The corridor includes the existing improved Laurel Highlands Hiking Trail (aka Laurel Ridge Trail), extending the entire length of the corridor.
- ❑ Quemahoning Greenway - The Quemahoning Greenway follows the Stonycreek River through Cambria and Somerset counties linking Johnstown with the proposed Allegheny Crossing corridor. Within Johnstown it could incorporate the proposed Sandyvale Memorial Gardens. The corridor covers approximately 28 miles along the Stonycreek River Valley and accesses unique historical features such as the Flight 93 National Memorial. While the corridor is envisioned to include a land trail, the Kiski-Conemaugh Water Trail currently transverses the entire length of the Quemahoning Greenway.
- ❑ Allegheny Front Wildlife Corridor - The Allegheny Front Wildlife Corridor is planned to connect the public with natural areas along nearly 84 miles within Cambria, Blair, Bedford and Somerset counties. The Corridor follows the Allegheny Front, the geological feature that divides the Appalachian Plateau from the Ridge Valley province of the Appalachian Mountains. This north/south preservation corridor accesses several sensitive environmental areas, Gallitzin State Forest, Blue Knob State Park as well as numerous State Gamelands. The Corridor is envisioned to contain limited access open space areas without formalized or improved trails to maximize the protection of sensitive resources within the Corridor.

### Proposed Preservation Corridors/Habitats

The Southern Alleghenies Greenways and Open Space Network Plan also proposed four (4) Preservation Corridors/Habitats within Cambria County. As with the Greenway Corridors, the Preservation Corridors/Habitats can either transcend county boundaries within the Southern Alleghenies region or can serve to join the region with noteworthy projects in surrounding regions. These corridors have elements of Greenways but focus more on preservation-based elements included ridge tops, high-quality streams and biological diversity areas. These four (4) corridors include:

- ❑ Clearfield Creek Wildlife Corridor - Clearfield Creek Wildlife Corridor is delineated to link existing blocks of publicly accessible open space. This Corridor stretches 16 miles across the northeastern portion of the County. Moreover, the Corridor passes through State Gamelands #184 and 108 as well as Gallitzin State Forest and intersects the Wildwood Springs Trail.
- ❑ Blacklick Creek Wildlife Corridor - Planned as a nearly 7 mile long preservation corridor that terminates at the Ghost Town Trail Connector. The preservation corridor is envisioned to be characterized by publicly accessible open space.
- ❑ Lilly Reservoirs Wildlife Corridor - The Lilly Reservoir Wildlife Corridor is characterized by publicly accessible open space. The corridor extends southeast from the Main Line Canal Greenway™ to the eastern border of the County. A portion of the corridor is situated within State Gameland #198.
- ❑ Flood Memorial Wildlife Corridor - This approximately 12 mile preservation corridor extends southeast from the Main Line Canal Greenway™ and the Johnstown Flood National Memorial to the Allegheny Front Wildlife Corridor and the County's southeastern border. Portions of the Corridor are situated within State Gameland #26 and Gallitzin State Forest. The Corridor is intended to include publicly accessible open space.



## Hike/Bike Trails

In addition to the existing open space and recreation areas that are part of County's recreation resources eight (8) recognized county wide and regional pedestrian trails are available for residents to use and enjoy. The following highlight's these resources:

- ❑ Allegheny Portage Railroad and Incline Trail: Located in Cambria and Blair Counties, the Allegheny Portage Railroad and Incline Trail follows the corridor of a mountain-crossing railroad that operated 1834-1854, this trail has two segments approximately 15 miles apart. The southern, crushed stone segment, about 2.3 miles long, winds through a lush forest to the renovated Staple Bend railroad tunnel. The 1.4-mile northern segment, a packed dirt and grass path, includes an original inclined plane rail bed. This trail passes historic structures including Engine House 6 and the Lemon House (once a home and a tavern for the railroad).
- ❑ Bells Gap Rail Trail: Located in Cambria and Blair Counties, the Bells Gap Rail-Trail is really two trails in one—a flat 2.1-mile southern section with smooth crushed limestone surface, and a rougher, more difficult northern section best-suited for mountain bike enthusiasts or hikers seeking a challenge. Horseback riding is permitted on the grass edge of the trail. The southern 2.1 miles of the trail consist of fresh crushed limestone surface.
- ❑ Ghost Town Trail: Located in Cambria and Indiana Counties, the Ghost Town Trail is designated as a National Recreation Trail and is named for the numerous old mining towns along the corridor that were served by the Ebenburg & Backlick Railroad and Cambria & Indiana Railroad. The trail winds through the scenic Blacklick Creek watershed, passing interpretive signs and historical artifacts including mining slag, railroad ties, and discarded rail cars. Just west of Vintondale is Eliza Furnace, one of Pennsylvania's best-preserved iron blast furnaces. Portions of the trail run through game lands.
- ❑ Jim Mayer Riverwalk Trail: Located in Cambria County, the Jim Mayer Trail is short, hard-packed dirt and crushed stone rail-trail in Johnstown parallel to the Stonycreek River. Numerous birdhouses installed along the route attract a variety of birds. The trail is named after the late James Mayer, a lawyer who devoted much of his time to preserving environmental resources in the Johnstown area.
- ❑ The Laurel Highlands Hiking Trail: Located in Cambria, Westmoreland, Somerset and Fayette Counties, the Laurel Highlands Hiking Trail is a 70-mile, continuous footpath stretching atop the Laurel Ridge. It winds from Ohiopyle, PA to Rt. 56, between Seward and Johnstown.
- ❑ Lost Turkey Trail: Located in Cambria, Somerset and Bedford Counties, the Lost Turkey Trail is a 26 mile trail that cuts through Gallitzin state forest, State Game Lands and Blue knob state park. The trail begins at the Southern terminus at The Babcock picnic area and continues for several miles with mild terrain along Pot Ridge. There are several camping spots in this area (even though it is not in state forest land). The trail then climbs Hog Back Ridge and continues on to Blue Knob State Park.

- ❑ Path of the Flood Trail: Located in Cambria County, the Path of the Flood Trail is a crushed limestone multi-use path between Mineral Point and Ehrenfeld, Pennsylvania. It is approximately 4 miles in length and in general follows the path of the historic 1889 Johnstown Flood.
- ❑ Prince Gallitzin State Park Trails: Located in Cambria County, the Prince Gallitzin State Park's trail system offers 12-miles of trails and a variety of opportunities including hiking, horseback riding, mountain biking, cross country skiing and snowmobiling. Many trails begin at the Point Trailhead near the campground.

## **Proposed Recreation Trails**

In addition to the proposed regional greenway corridors identified in the Southern Alleghenies Greenways and Open Space Network Plan, sixteen (16) proposed recreation trails were identified. The following describes these proposed trails:

- ❑ Rock Run Connector - This recreational corridor extends from the Clearfield Creek Wildlife Corridor west to the Rock Run Recreation Area. The entire corridor is situated within previously secured lands including State Gameland #108, Prince Gallitzin State Park and the Rock Run Recreational Area. The nearly 10 mile corridor is planned to include a maintained dirt trail. The corridor has been planned for only pedestrian and/or bicyclists.
- ❑ Rock Run Connector Alternative - This alternate route bypasses State Gameland #108 and most of Prince Gallitzin State Park. This 9 mile corridor is envisioned to include a marked and maintained dirt trail.
- ❑ Nanty Glo North Trail - The Nanty Glo North Trail transverses nearly 7 miles northwest from Nanty Glo and the Ghost Town Trail Connector to the Vintondale - Susquehanna Trail. The improved/maintained dirt trail also intersects the Colver Connector.
- ❑ Duman Dam Connector - This recreational corridor is intended to link the Colver Connector Greenway to Duman Lake. This approximately 5-mile corridor is envisioned to include a marked and maintained dirt trail.
- ❑ Colver Connector - This 5.5 mile recreation corridor links Colver to the Nanty Glo North Trail. The corridor is intended to include an improved/maintained dirt trail.
- ❑ Susquehanna Trail - The Susquehanna Trail is an approximately 15 mile corridor that runs from the northwestern corner of the County to an intersection with the Ghost Town Trail. The Trail is envisioned to consist of a maintained dirt trail in combination with a water trail along the West Branch Susquehanna River. Intersections with the Carrolltown Trail and the Vintondale - Susquehanna Trail also occur along the corridor.
- ❑ Johnstown – Portage Trail - This trail generally extends east from Johnstown to an intersection with the Main Line Canal Greenway™. The nearly 12 mile long corridor, which intersects the Flood Memorial Wildlife Corridor, is envisioned to include a maintained dirt trail.

- ❑ Vintondale – Susquehanna Trail - This trail extends 15.5 miles from Vintondale to the Susquehanna Trail. The recreation corridor passes through State Gameland #79 and intersects the Nanty Glo North Trail. A maintained dirt trail is intended to run the length of the corridor.
- ❑ Portage South Trail - This trail extends southeast from Portage and terminates in State Gameland #26. The approximately 5.5 mile corridor is envisioned to consist of a maintained dirt trail.
- ❑ Carrolltown Trail - The Carrolltown Trail, traversing nearly 5 miles, is a recreation trail connects the Susquehanna Trail to Carrolltown. It is envisioned to include an improved/maintained dirt trail.
- ❑ Gameland to Gameland Trail - The Gameland to Gameland Trail connects State Gamelands #108 and #158 via a recreational trail that is nearly 3.5 miles long. The corridor is envisioned to consist of a maintained dirt trail.
- ❑ Williams Run Trail - This trail runs northeast from the Ghost Town Trail Connector near Nanty Glo to an intersection with the Blacklick Creek Wildlife Corridor. The corridor is 7.5 miles long and could someday accommodate a maintained dirt trail.
- ❑ Wildwood Springs Trail - The Wildwood Springs Trail runs 7.5 miles to Gallitzin. The corridor intersects the Clearfield Creek Wildlife Corridor and the Little Conemaugh Trail and passes through State Gameland #279. Wildwood Springs Trail is envisioned to be a maintained dirt trail.
- ❑ Laurel Run Trail - The Laurel Run Trail extends south from Vintondale to an intersection with the Main Line Canal Greenway™ north of Johnstown. The 9.5 mile recreational corridor could be improved to include a maintained dirt trail.
- ❑ Little Conemaugh Trail - This trail stretches approximately 4.5 miles from the Wildwood Springs Trail to the Main Line Canal Greenway™. The Little Conemaugh Trail accesses State Gameland #279 and is envisioned to consist of a maintained dirt trail.
- ❑ Scalp Level Loop - The Scalp Level Loop extends north from Scalp Level 2.5 miles. This trail is intended to include a maintained dirt trail.

### Proposed Mainline Trail

The Allegheny Ridge Corporation is leading the planning efforts for this proposed trail. As the name implies, this proposed trail would run along the course of the mainline canal. The trail would provide a physical connection between Ehrenfeld, Summerhill and Wilmore Boroughs and would cross through Croyle and Summerhill Townships. The trail would continue through the Portage area, Lilly and onto Cresson. The trail would have a southern terminus in Ehrenfeld where it would connect with the Path of the Flood Trail. Once completed, the Mainline Trail would become part of the Pennsylvania Mainline Canal Harrisburg-Pittsburgh Greenway.

### Proposed Path of the Flood Trail Extensions

Recent planning efforts in the Forest Hills Region have identified proposed three (3) extensions to the Path of the Flood Trail. These proposed segments of the Path of the Flood Trail are essential as a trail and as a piece of local heritage tourism. The proposed extensions would literally follow the path of the floodwaters between the South Fork Fishing and Hunting Club (SFF&HC) to South Fork, connecting with the existing segments of the Path of the Flood Trail. It connects the communities of Ehrenfeld and South Fork with the Johnstown Flood National Memorial (JFNM) at the abutments of the remains of the Dam as well as the remaining structures of the SFF&HC that comprise a National Register Historic District in the village of St. Michael in Adams Township. The interpretive role of this trail extension cannot be overemphasized. The following highlights these proposed trail extensions:

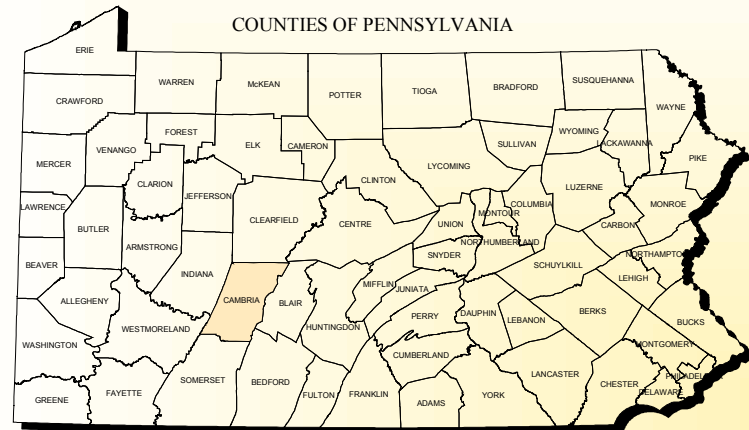
- ❑ Existing Trail to Dam Site - The proposed segment of the Path of the Flood would extend from the actual site of the Dam down to South Fork has been discussed but currently is not in the works. This proposed extension is set to be analyzed by an engineering study under the auspices of the Cambria County Conservation and Recreation Authority. The Study results are anticipated by the latter part of 2011 and will identify issues and opportunities, a precise route, cost estimates and other factors affecting feasibility.
- ❑ Dam Site to South Fork Hunting and Fishing Club/ SFF&HC Historic District - Trail segments that would connect the Dam site to the South Fork Hunting and Fishing Club has been discussed but is currently not realized. From the Dam Site the trail would then connect with the nearby SFF&HC Historic District mostly via sharing the road.
- ❑ South Fork Hunting and Fishing Club/ SFF&HC Historic District to Johnstown Flood Memorial Visitor Center - A trial segment is envisioned to connect the Historic District with the National Flood Memorial Visitors Center. The trail would extend across the bridge at Lake Road (T-352) through the Park of 1889 to the Visitors Center.

### Proposed Forest Hills Trails

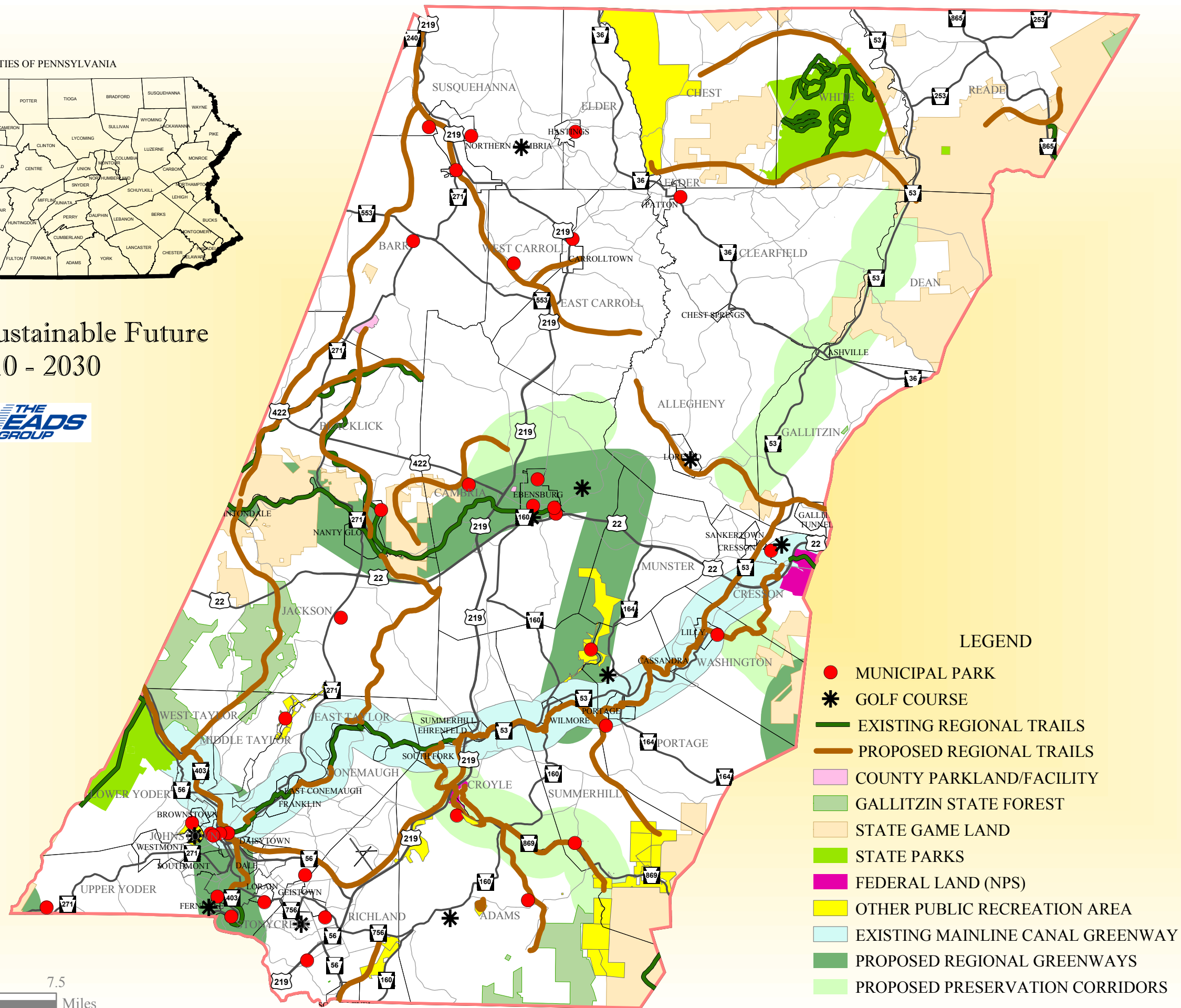
Recent planning efforts in the Forest Hills Region have identified three (3) proposed trail segments that would spur off of the proposed Path of the Flood extensions. These trails are envisioned to connect the St. Michael area with Sidman, Sidman to the Beaverdam Run Reservoir along the Rt 869 corridor and Sidman to Gallitzin State Forest Land.

### Proposed Johnstown Regional Trail and Park Network

The goal is to develop the Path of the Flood Trail and the Conemaugh Gap Trail as parts of the Pennsylvania Mainline Canal Greenway through Downtown Johnstown, and add spurs to Whitewater Park along the Stonycreek and to Conemaugh Memorial Hospital as a "Wellness Trail." Water Trails also are being developed, including enhancements to Whitewater Park in Conemaugh Township, Somerset County, and access in the City of Johnstown. Several parks and park enhancements also are planned, including major expansion and improvements to the Stonycreek River Park in Kernville.



Toward a Sustainable Future  
2010 - 2030



#### LEGEND

- MUNICIPAL PARK
- \* GOLF COURSE
- EXISTING REGIONAL TRAILS
- PROPOSED REGIONAL TRAILS
- COUNTY PARKLAND/FACILITY
- GALLITZIN STATE FOREST
- STATE GAME LAND
- STATE PARKS
- FEDERAL LAND (NPS)
- OTHER PUBLIC RECREATION AREA
- EXISTING MAINLINE CANAL GREENWAY
- PROPOSED REGIONAL GREENWAYS
- PROPOSED PRESERVATION CORRIDORS



## CAMBRIA COUNTY PLANNING COMMISSION

401 CANDLELIGHT DR.  
EBENSBURG, PA 15931

# CAMBRIA COUNTY COMPREHENSIVE PLAN RECREATION AREAS AND TRAILS



FEBRUARY 2011

## **Water Based Recreation**

Recent improvements to the waterways in the County have helped to draw residents and visitors to water based recreation opportunities in the County. These opportunities generally include fishing and boating opportunities. The following section describes these opportunities.

### Lake Access/Boat Launch Ramps

Fifteen (15) lake access/launch ramps at seven (7) impoundments established by the Pennsylvania Fish and Boat Commission are located in Cambria County, as listed below:

- ❑ Wilmore Reservoir
- ❑ Beaverdam Run Reservoir
- ❑ Lake Rowena
- ❑ Ebensburg Reservoir
- ❑ Vetera Dam
- ❑ Duman Dam
- ❑ Glendale Lake (9 launches)

### Water Trails

Water trails are recreational waterways on a streams, rivers and lakes between specific points, containing access points and day-use and/or camping sites for the boating public. Water trails emphasize low-impact use and promote stewardship of the resources. There are two (2) water trails located in the County, including:

- ❑ The Kiski-Conemaugh River Water Trail - The Trail extends for 84 miles from south of Johnstown at Greenhouse Park on the Stonycreek River to the mouth of the Kiskiminetas River at Freeport. This is a good river for paddling novices and families, offering an improving warm-water fishery and a variety of interesting features, including the Conemaugh Gorge and Packsaddle Gap, cut-stone bridges, the Conemaugh River Dam, Main Line Canal traces, and historical riverside communities.
- ❑ The West Branch Susquehanna River Trail - The water trail is part of the Chesapeake Bay Gateways Network, a partnership system of over 20 water trails and 120 parks, refuges, maritime museums and historic sites in the Chesapeake watershed.

### Fishing Opportunities

Continued improvements to the waterways in the County will help to draw residents and visitors to water based recreation opportunities in the County. These opportunities include fishing on open waters and on streams/rivers. There are a number of special designated streams in the County that create excellent fishing opportunities. The following highlights the key fishing related waterway assets in the County.

❑ **Approved Trout Waters**

Twenty (20) waterways in the County are officially classified as “approved trout waters” by the Pennsylvania Fish and Boat Commission. This means that these waters contain significant portions that are open to public fishing and are stocked with trout. The following highlights these resources:

<b>Planning Region</b>	<b>Name</b>
1	Elton Sportsmens Dam
1	Little Paint Creek
1, 2	Hinckston Run
1, 2	Laurel Run (trib to Conemaugh River)
2	Beaverdam Run
2	Bens Creek
2	Howells Run
2	Lake Rowena
2	Laurel Run (trib to South Fork Little Conemaugh River)
2	Noels Creek
2	North Branch Little Conemaugh River
2	Stewart Run
2, 3	Chest Creek
2, 3	Clearfield Creek (confluence with Beaverdam Run near Ashville downstream to 300 meters downstream of the T-510 Bridge at Condron)
2, 3	Laurel Lick Run
2, 3	North Branch Blacklick Creek
3	Little Killbuck Run
3	Duman Lake
3	Slate Lick Run
3	Killbuck Run

Source: Pennsylvania Fish and Boat Commission (PFBC)

❑ Naturally Reproducing Trout Streams

The County supports thirty eight (38) Naturally Producing Trout Streams, which are waterways that are capable of naturally supporting the reproduction of Trout. The following highlights these resources:

Planning Region	Stream Name	Section Limits
1	Bear Wallow Run	Headwaters downstream to mouth
1	Bottle Run	Headwaters downstream to mouth
1	Little Mill Creek	Headwaters downstream to mouth
1	Little Paint Creek	Elton Sportsmens Club Dam down to T305 bridge
1	Coon Hollow	Headwaters downstream to mouth
1	Rachel Run	Headwaters downstream to mouth
1	Sulphur Creek	Headwaters downstream to mouth
1	Wildcat Run	Headwaters downstream to mouth
1, 2	Custer Run	Headwaters downstream to mouth
1, 2	Laurel Run	Headwaters downstream to 1.2 kilometers upstream of confluence with Red Run
1, 2	Otto Run	Headwaters downstream to mouth
1, 2	Red Run	Headwaters downstream to mouth
1, 2	Sandy Run	Headwaters downstream to mouth
1, 2	South Fork Little Conemaugh River	Headwaters down to SR 0869 Bridge at Lloydell
2	Beaverdam Run	Headwaters downstream to mouth
2	Beaverdam Run	Headwaters downstream to mouth
2	Bens Creek	Headwaters down to 0.9 kilometers downstream of LR 11071 Bridge
2	Big Cedar Run	Headwaters down to Beaverdam Rn Res Backwater
2	Birch Run	Headwaters downstream to mouth
2	Dividing Hollow	Headwaters downstream to mouth
2	Howells Run	Headwaters downstream to 1st SR 2013 bridge downstream of Ebensburg
2	Kane Run	Headwaters downstream to mouth
2	Laurel Run	Headwaters downstream to mouth
2	Little Saltlick Run	Headwaters downstream to mouth
2	Mud Run	Headwaters downstream to mouth
2	Saltlick Run	Headwaters down to Saltlick Reservoir backwater
2	Stewart Run	Headwaters downstream to mouth
2	Trout Run	Headwaters down to SR 0164 Bridge
2	Un-named Trib. To South Branch Blacklick Creek (@ rm 12.62)	Headwaters downstream to mouth
2	Trout Run	Headwaters down to SR 0164 Bridge
2, 3	Carney Run	Headwaters downstream to mouth
2, 3	Laurel Lick Run	Headwaters downstream to mouth
2, 3	Sandy Run	Headwaters downstream to mouth
3	Browns Run	Headwaters to Mouth
3	Duclos Run	Headwaters downstream to mouth
3	Laurel Run	Headwaters downstream to mouth
3	Killbuck Run	Headwaters downstream to mouth
3	Moss Creek	Headwaters downstream to mouth

Source: Pennsylvania Fish and Boat Commission (PFBC)



❑ Class A Wild Trout Waters

The County is home to four (4) Class A Streams that support a population of naturally produced trout of sufficient size and abundance to support a long-term and rewarding sport fishery. The following highlights these resources:

Planning Region	Name	Section Limits
1	South Fork Little Conemaugh River	Headwaters downstream to Beaverdale Reservoir
2	Bens Creek	Headwaters downstream to portage water authority backwater
2	Big Cedar Run	Headwaters downstream to Beaverdam Run Reservoir backwater
3	Sandy Run	Headwaters downstream to mouth

Source: Pennsylvania Fish and Boat Commission (PFBC)

❑ Wilderness Trout Waters:

The County is home to two (2) Wilderness Trout Streams. Wilderness Trout Streams are located in a remote, natural and unspoiled environment. The superior quality of these watersheds is considered an important part of the overall angling experience. The following highlights these resources

Planning Region	Name	Section Limits
1	South Fork Little Conemaugh River	Headwaters downstream to Beaverdale Reservoir
3	Rogues Harbor Run	Headwaters downstream to Mouth

Source: Pennsylvania Fish and Boat Commission (PFBC)







## Statistical Summary

Community and Recreation facilities and services serve as the vital infrastructure that supports human activity throughout Cambria County's 63 municipalities. Some community facilities and services are limited in many parts of the County and deficiencies or gaps exist. The number of municipal governments, in combination with the rural and distant nature of established communities, inhibits the cost-effective coverage and extension of some services and facilities. The following provides a statistical summary of the Community and Recreation facilities located in the County.

- ❑ Police Service:
  - 32 municipalities (51%) provide their own local police force.
  - 17 municipalities (27%) contract with a neighboring municipal force or regional police force organization.
  - 14 municipalities (22%) rely on the State Police Troop A Ebensburg for the police coverage.
  - Overall a majority of the police forces serve a single municipality.
- ❑ Fire Service:
  - 46 individual fire companies (43 located in the County).
  - Overall a majority of the fire departments serve one or two municipalities.
- ❑ Ambulance Service:
  - 22 community-based providers – 30 in 2004.
  - 11 municipalities are served by more than 1 provider.
  - Overall the Ambulance providers serve one to three municipalities.
- ❑ Education Facilities:
  - 14 public school districts
  - 12 parochial pre-elementary schools
  - 11 Job Training Opportunities
  - 4 Higher Education Institutions
  - 2 parochial or non-public High schools
  - 2 Career and Vocational Technology
- ❑ Health Care Facilities:

Significant Concentration in Johnstown Area and to a lesser extent Ebensburg and Northern Cambria Borough/Hastings Areas. Gaps exist in other remaining areas.

  - 20 Outpatient Facilities
  - 14 Home Care Facilities
  - 10 Nursing Care Facilities
  - 6 Home Health Agencies
  - 4 Hospitals (2 Traditional Hospitals & 2 Rehabilitation Hospitals)
  - 2 Urgent Centers
  - 1 Veterans Administration Clinic
  - 1 Alternative Treatment Organization (4 locations)

- ❑ Social/Culture Facilities:  
Generally evenly distributed through County – Gaps exist in Read-White Township Area and Forest Hills Areas:
  - 20 Cultural Facilities
  - 14 County System Libraries
  - 9 County Area Agency Senior Centers
  - 2 Convention Centers
  
- ❑ Solid Waste Management Services:
  - 238 identified Illegal Dump Sites.
  - 65% of municipalities have illegal dumping activity.
  - 19 municipalities have recycling Drop Off Bins-equally spread across the County.
  - 59 (94%) of Cambria County's municipalities have trash collection.
  - 12 (19%) of Cambria County's municipalities have a curbside recycling program.
  - 85% percent of the illegal dump sites were located in municipalities without a curbside recycling program.
  
- ❑ Recreation Areas and Facilities:  
There are approximately 65,000 acres of open space and public recreation areas in Cambria County. The following highlights these and other recreation resources located in the County:
  - 38 Naturally Producing Trout Streams
  - 36 Municipal Parks/recreation areas
  - 24 Proposed trails
  - 20 Approved trout waters
  - 15 Lake access/launch ramps at 7 impoundments established by the Pennsylvania Fish and Boat Commission
  - 10 State Game Lands
  - 10 golf courses
  - 8 Existing County-wide trails
  - 8 Public Recreation Areas
  - 4 Proposed Greenways
  - 4 Proposed Preservation Corridors/Habitats
  - 4 Class A Streams
  - 3 County Affiliated Facilities
  - 2 Water Trails
  - 2 State Parks
  - 2 National Park Service Sites
  - 2 Wilderness Trout Streams
  - 1 County Park
  - 1 State Forest
  - 1 Recognized Greenway

## Summary of Findings

The major findings and conclusions drawn from the foregoing analysis of the Public Services and Recreation Facilities in the County are summarized below. Also incorporated are results from a Public Opinion Survey completed by the Citizens of the County in 2010 as part of this Comprehensive Planning Process.

- ❑ *Police Service* - There are approximately 32 municipal police forces in the County. A majority of the police forces serve single municipality. Municipal police coverage is prominent in all of Planning Region 1 and in the western portion of Planning Region 2. State Police coverage is relied on heavily in the northern Planning Region 3 and in Munster and Portage Townships in Planning Region 2.
- ❑ *Police Protection* - Overall police protection is not seen as an existing major problem in Cambria County with only 10% of the respondents noting this as an issue. Respondents from Planning Region 2 reflect the countywide percent while only 2% of the respondents from Region 1 note this as an issue. Worth noting is 25% of the respondents from Region 3 noted this as an issue. Region 3 municipalities rely heavily on State Police for protection.
- ❑ *Regional Police Protection* - Countywide, 24% of respondents note regional police protection among the “top 5” improvements county or local leaders should address in the future. Respondents from Planning Region 2 reflect the countywide percent while Regions 1 and 2 were slightly below at 22 % and 21%, respectively.
- ❑ *Fire Service* - There are approximately 46 individual fire companies serving the County. A majority of the fire departments serve one or two municipalities.
- ❑ *Fire Protection* - Overall fire protection is not seen as an existing problem in Cambria County with only 5% of the respondents noting this as an existing issue. Respondents from Planning Regions 2 and 3 reflect the countywide percent while only 1% of the respondents from Region 1 note this as an issue.
- ❑ *Regional Fire Protection* - Overall regional fire protection is not seen a future problem to be faced by County/Local Officials with only 6% of the respondents noting this as a future issue.
- ❑ *Public Education* - Overall public education is not seen as an existing major problem in Cambria County with only 9% of the respondents noting this as an issue. Respondents from Planning Regions 1, 2 and 3 reflect the countywide percent.
- ❑ *Health Care* - The Health Care Center of the County is in the Johnstown area with numerous Hospitals, and care facilities. Concentrations of Health Care facilities are also located in the Ebensburg and Hastings Areas. Gaps in Health Care Facilities are in the northeastern portions and the Forest Hills Region of the County.
- ❑ *Social/Culture Facilities* - These types of facilities are generally accessible to all County residents although there is a higher concentration in the Johnstown/Richland/Ebensburg areas and facility gaps do exist in the northeastern (Read, White and Dean Townships) and southeastern (Forest Hills Region) of the County.

- ❑ *Solid Waste Management Service* - Municipal waste and recycling services are available to residents in the County. Over 238 identified Illegal Dump Sites have been identified in the County with Responsibility for remediating these illegal dump sites following to a collaborative effort between the Solid Waste Management Authority, Keep Cambria County Beautiful and local Municipalities.
- ❑ *Existing Recreation* - As listed in the statistical summary above, the County offers an impressive number of land and water based recreation facilities and opportunities which are heavily aimed at the outdoor recreation enthusiastic with a number of county wide trails and public recreation areas available. The County is also home to State Forest, Gamelands and Park lands as well as other public recreation and open spaces. Fishing and boating opportunities do exist within the county as there are 15 Lake access/launch ramps at 7 impoundments established by the Pennsylvania Fish and Boat Commission. A key issue hampering the expansion of the water based recreation opportunities are water quality issues mainly from Abandoned Mine Drainage (AMD) that exist throughout the County.
- ❑ *Recreation Importance* - Are seen as relatively important to County residents as 22% of respondents noted indoor recreation, 24% noted expanded use of waterways, 25% noted outdoor recreation and 35% noted hiking/biking trails as important future improvements.
- ❑ *Recreation Importance* - Countywide, respondents note Hiking/Biking Trails, Outdoor Recreation and Expanded Use of Waterways among the “top 5” improvements county or local leaders should address in the future. Of particular note upon the responses are 41% of respondents from Planning Region 1 noted expanded use of waterways, 43% of respondents from Planning Region 1 also noted hiking/biking trails and 32% of respondents from Planning Region 2 noted outdoor recreation as future improvements.
- ❑ *Proposed Recreation* - The County adopted a regional Greenways Plan in 2007 that identified approximately 24 proposed trails and greenways that would be located throughout the County. Based on the results of the public survey described above, trail connections and expansions seemingly are receiving more attention in Planning Region 1 which includes the Johnstown Area and portions of the Forest Hills Region.